



MITCHELL ELEMENTARY SCHOOL
3800 #5 Rd, Richmond BC V6X 2T7



Phone 604-668-6225 | Early Warning 604-668-6229

Website: mitchell.sd38.bc.ca

Principal/Directrice: Mme V. Carrière - Vice Principal/Directrice Adjointe: Ms.T. Norman

Newsletter 26 - May 8, 2026

Another great week has come and gone at Mitchell! Our intermediate students have had their final track practice this week and should feel prepared for our meet at Minoru on May 26. Please make sure to return permission slips for this event by Monday, May 11, so that we can prepare well. On Wednesday evening next week (**May 13**), we will be hosting a **fun Math Night in the gym**. This is a free event for all Mitchell families. Please pop by and celebrate our Math achievements with us! The event is drop-in and will run from 4:00 to 5:30 PM.

Upcoming Events/ Important Dates

May 12 - PAC AGM at 6PM in Library

May 13 - Math Night at Mitchell (4 to 5:30 PM) all are encouraged to join!

May 15 & 18 - NO SCHOOL

May 26 - Gr. 4-7 at Minoru Park for Track & Field

May 27 - Immunisation Clinic

May 29 - Welcome to Kindergarten

June 5 - Sports Day/Early Dismissal at 1:45

June 24 - Gr. 7 Farewell Celebration (9:15)

Class placement requests for 2026/2027

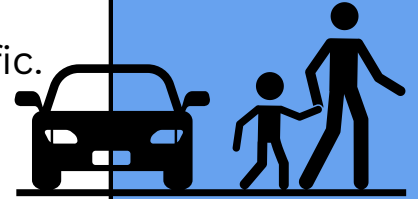
On May 1, an email was sent to all families regarding class placement requests/feedback. Please make sure to follow the guidelines outlined in this document diligently if you are planning on putting in a request. We consider all request, but not all of them can be accomodated. In most cases, parental requests should not be required. Deadline to submit a request in writing is June 1st.

Are you curious to know more about Mitchell? Please go to our school website, where you'll find updates on our school goal and more at: mitchell.sd38.bc.ca

Pick-Up/Drop-Off Reminders

Let's all work together to keep our students safe! Please follow these rules to ensure smooth pick-ups and drop-offs for everyone:

- Do NOT double park. This creates congestion and traffic.
- If you need to park, use a parking space.
- Go slow! 10km/h.
- Do NOT park in the traffic circle. You can stop to do a very quick drop-off only.
- Pedestrians have priority at the crossing. Politely and patiently wait.
- Dismount and walk bicycles and e-scooters when entering the parking lot and on school sidewalks.
- Walk in designated areas (pathways, sidewalks, crosswalks).
- Be polite, courteous and respectful at all times.



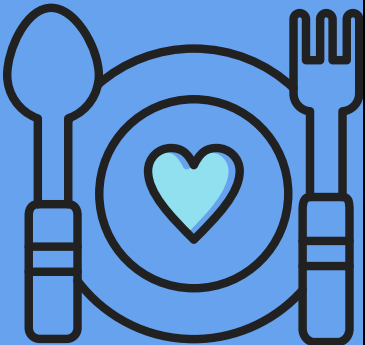
Thank you for your cooperation.

Universal Hot Lunch

The Richmond School District has given the go-ahead for all students to receive a hot lunch on the following upcoming dates:

- May 20;
- June 3 & 17

We encourage all families to participate. An email has been sent to all families to inform you of the ordering process. Please call the office if you need assistance with ordering.





Updated Procedures for Volunteers/Volunteer Drivers

All SD38 schools will now require all driver volunteers to complete a Criminal Record Check (CRC). Other volunteers may be required by school administration to complete a CRC, depending on the nature of the volunteering activity, including chaperoning field trips. This is a simple procedure and can be completed online. It takes 5-10 minutes. Teachers will provide families with a QR code and our organization's code when families need to complete this.

We will also ask volunteers to provide the following information to the office:

- Completed volunteer form
- Copy of CRC completion confirmation email
- Copy of proof of insurance (for drivers only)
- Admin will continue to complete a driver's licence check (for drivers only)

CRC's are valid for 2 calendar years.

District volunteer forms are valid for one school year.

Parents/guardians with several children attending Mitchell only need to complete their CRC/volunteer form once.

We thank you for your understanding and cooperation as we implement these important safety guidelines at Mitchell. We are very appreciative for all our volunteers and are looking forward to more fun field trips.

FIREBIRD CORNER

SCHOOL HOURS

CLASSES START: 8:45

RECESS: 10:10 - 10:25

LUNCH RECESS: 11:50 - 12:20

LUNCH BREAK: 12:20 - 12:42

CLASSES END: 2:45

OFFICE HOURS

8:00 AM - 4:00 PM



VISITORS TO THE SCHOOL

The main doors to the school remain unlocked during office hours from 8:00 – 3:15. Visitors are **required to check into the office** when entering the building. This is for everyone's safety. Thanks for your cooperation!



PARKING/TRAFFIC AT MITCHELL

This is a reminder to remain courteous and respectful in our parking lot.

Help keep our students safe by using the drop off zone for picking up and dropping off students only. Respect the 10km/h speed limit. Do not leave your car unattended in the drop-off zone or roundabout; if you need to come into the school, please park in a designated parking space at the west end of the school. Also, a reminder that there are no left turns permitted before and after school when leaving our parking lot. Thanks for your cooperation!



IN CASE OF ABSENCE OR LATE ARRIVAL

Please inform the school by telephone when your child will be late or absent due to illness or an appointment, etc.

Our Early Warning line - **604-668-6229** - is available 24 hours a day for parents to leave a message. Please clearly state your child's first and last name, division and reason for absence. If no prior notice of absence is received, we will call home to determine the reason for the absence. Students arriving after 8:45 a.m. are required to enter through the main doors and check-in at the office before going to class.





FAMILY MATH NIGHT

Drop in with the whole family
for an evening of math games
in our gym!

Absolutely for FREE

13 May, 2026
4:00 to 5:30 PM

Participate in our
Math Challenge for
a chance to win a
Martial Arts Party at
Sirota's Alchymy in
Vancouver!



**Julia Robinson
Mathematics
Festival®**

SPONSORED BY MITCHELL PAC

ÉCOLE MITCHELL ELEMENTARY

Sports Day & Family Appreciation Day 2026

JUNE 5, 2026

EARLY DISMISSAL AT 1:45



SPECIAL NOTES:

- Parents or guardians are encouraged to attend.
- Dress your kids in comfortable sports attire, in their team colors if possible.
- Send water bottle, hat, sunscreen, and a packed lunch and snack.
- Muffins and coffee free for parents/guardians!

Join us all day or just for a muffin in the morning!



HOW WE LEARN AND WORK TOGETHER

The Board of Education recognizes its obligation to provide all members of our school district community with a positive climate and a safe, healthy environment.

As we learn and work together, we will...

- 1 Show respect for the diversity of the members of our school and district community.**
- 2 Behave in a safe, considerate and courteous manner.**
- 3 Not threaten, harass, intimidate or assault, in any way, any person within our school district community, through physical violence, print or electronic media.**
- 4 Not be in possession of weapons, dangerous articles, alcohol or illegal drugs while in school or work.**
- 5 Show respect and pride in our school district buildings and equipment through care and appropriate use of school district property.**
- 6 Respect the non smoking environment of our schools and school district facilities.**

Our expectations for how we learn and work together shall apply to everyone in our schools and at school functions.

The complete code of conduct
is available online at:

sd38.bc.ca/codeofconduct





 Summer
LEARNING



RICHMOND
SCHOOL DISTRICT NO. 38

SUMMER LEARNING 2026

Join our fun and engaging summer learning programs where students can explore new interests, learn new skills, engage in non-credit enrichment academic courses or complete a full credit course.

IMPORTANT INFORMATION

- ▶ Students register for the grade level that they will be attending in September 2026
- ▶ Note different registration dates for different grade groups.
- ▶ Current Kindergarten to Grade 6 students may register for **ONLY ONE** Ministry-funded course and one/two fee-based camps.
- ▶ Current Grade 7 and secondary students: up to **THREE** Ministry-funded courses.
- ▶ **NEW!** Students attending a public school outside of Richmond School District and **ALL** independent school students **MUST** submit eligibility documents within 48 hours of registration. Failure to do so will result in course cancellation.
- ▶ **NEW** elementary enrichment programs at Ryng Elementary and Tomsett Elementary

REGISTRATION DATES | PROGRAM DATES | LOCATIONS

ELEMENTARY PROGRAMS

PROGRAM	DATES	TIMES	REGISTRATION BEGINS @ 7 PM	LOCATIONS (SUBJECT TO CHANGE)
ENRICHMENT (3-week programs)	July 6 - 24	9:00-11:45 am, or 12:15-3:00 pm	Wed April 8 (Gr 1-4) Thur April 9 (Gr 5-7)	Brighthouse Elementary Byng Elementary Tomsett Elementary
ENRICHMENT (4-week programs)	July 6 - 31	8:30-10:30 am, or 11:00 am-1:00 pm, or 1:30-3:30 pm	Wed April 8 (Gr 1-4) Thur April 9 (Gr 5-7)	Royd Secondary MacNeill Secondary
CAMPS - fee based (3 week)	July 6 - 24	9:00-11:45 am, or 12:15-3:00 pm	Tues April 7	Brighthouse Elementary Byng Elementary Tomsett Elementary
CAMPS - fee based (4 week)	July 6 - 31	8:30-10:30 am, or 11:00 am-1:00 pm, or 1:30-3:30 pm	Tues April 7	Boyd Secondary MacNeill Secondary

Eligible students may register for ONE enrichment course and/or one or more fee-based camps.

Students register for the grade level that they will be entering in September 2026.

SECONDARY PROGRAMS

PROGRAM	DATES	TIMES	REGISTRATION BEGINS @ 7 PM	LOCATIONS (SUBJECT TO CHANGE)
NON-CREDIT	July 6 - 31	8:45-10:45 am, or 11:15 am-1:15 pm, or 1:45-3:45 pm	Mon April 13 (Gr 8) Tues April 14 (Gr 9) Wed April 15 (Gr 10-11) Thurs April 16 (multi-grade)	Burnett Secondary
FULL CREDIT	July 2 - 31	8:00-11:45 am, or 12:15-4:00 pm	Wed May 6 (Gr 12) Thur May 7 (Gr 11) Fri May 8 (Gr 10)	McNair Secondary Steveston-London Secondary

Eligible students (including current Grade 7 students) may register for up to THREE secondary courses.



MORE INFORMATION TO COME

FULL CATALOGUE AVAILABLE IN LATE FEBRUARY