



MITCHELL ELEMENTARY SCHOOL

3800 #5 Rd, Richmond BC V6X 2T7

Phone 604-668-6225 | Early Warning 604-668-6229

Website: mitchell.sd38.bc.ca

Principal/Directrice: Mme V. Carrière - Vice Principal/Directrice Adjointe: Ms.T. Norman



Newsletter 18 - February 13, 2026

Happy Thursday, Firebirds! This week was short but busy with basketball, Olympics, Valentine's Day celebrations and Carnaval. Phew! **Please note that Pink Shirt Day will be on Feb. 25, NOT Feb. 26 as stated in previous newsletters. This is your reminder that there is no school on Friday, Feb. 13 (Pro-D) & Monday, Feb. 16 (Family Day).** We hope you all enjoy some family time on Monday. Hopefully, the weather continues to be beautiful! Have a wonderful long weekend.

Upcoming Events/ Important Dates

Feb. 13 - PRO-D - NO SCHOOL

Feb. 16 - Family Day - NO SCHOOL

Feb. 17 - Lunar New Year

Feb. 17 - March 19 - Ramadan

Feb. 23 -27 – Scholastic Book Fair

Upcoming Events/ Important Dates (part 2!)

Feb. 25– Pink Shirt Day

Feb. 25 & 26 – Early dismissal at 1:45

March 11 - Dufflebag Theatre Performance for all students

March 13 - PAC Movie Night

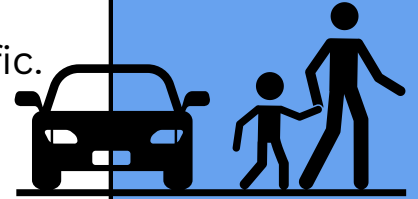
March 16 to 27 - Spring Break

Are you curious to know more about Mitchell? Please go to our school website, where you'll find updates on our school goal and more at: mitchell.sd38.bc.ca

Pick-Up/Drop-Off Reminders

Let's all work together to keep our students safe! Please follow these rules to ensure smooth pick-ups and drop-offs for everyone:

- Do NOT double park. This creates congestion and traffic.
- If you need to park, use a parking space.
- Go slow! 10km/h.
- Do NOT park in the traffic circle. You can stop to do a very quick drop-off only.
- Pedestrians have priority at the crossing. Politely and patiently wait.
- Dismount and walk bicycles and e-scooters when entering the parking lot and on school sidewalks.
- Walk in designated areas (pathways, sidewalks, crosswalks).
- Be polite, courteous and respectful at all times.



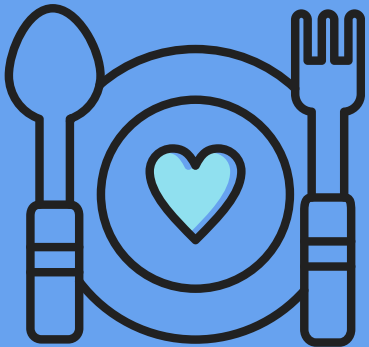
Thank you for your cooperation.

Universal Hot Lunch

The Richmond School District has given the go-ahead for all students to receive a hot lunch on the following upcoming dates:

- Feb. 18
- March 4 & 11;
- April 1 & 15;
- May 6 & 20;
- June 3 & 17

We encourage all families to participate. An email has been sent to all families to inform you of the ordering process. Please call the office if you need assistance with ordering.





Updated Procedures for Volunteers/Volunteer Drivers

All SD38 schools will now require all driver volunteers to complete a Criminal Record Check (CRC). Other volunteers may be required by school administration to complete a CRC, depending on the nature of the volunteering activity, including chaperoning field trips. This is a simple procedure and can be completed online. It takes 5-10 minutes. Teachers will provide families with a QR code and our organization's code when families need to complete this.

We will also ask volunteers to provide the following information to the office:

- Completed volunteer form
- Copy of CRC completion confirmation email
- Copy of proof of insurance (for drivers only)
- Admin will continue to complete a driver's licence check (for drivers only)

CRC's are valid for 2 calendar years.

District volunteer forms are valid for one school year.

Parents/guardians with several children attending Mitchell only need to complete their CRC/volunteer form once.

We thank you for your understanding and cooperation as we implement these important safety guidelines at Mitchell. We are very appreciative for all our volunteers and are looking forward to more fun field trips.

Ministry Learning Survey

During the months of January to April, School District #38 is participating in the 2026 Ministry of Education Electronic Anonymous Student Learning Survey Project in cooperation with all other school districts throughout the province.

Parents/Guardians/Caregivers can complete the online Anonymous Student Learning Surveys any time before May 1st, 2026, providing immediate results to the school and the district.

To complete the survey:

1. Go to any computer that has an up-to-date internet browser access at home, work, or school.
2. Go to www.bced.gov.bc.ca/sat_survey/access.htm
3. Under the section Direct Access – no logon number required select:
 - **District: Richmond - SD38**
 - **School: Mitchell Elementary**
 - **Language: the language of your choice**
4. Complete the survey.
5. When you are finished the survey, you will get a confirmation message
6. Once complete, your school will have the results immediately



FIREBIRD CORNER

SCHOOL HOURS

CLASSES START: 8:45

RECESS: 10:10 - 10:25

LUNCH RECESS: 11:50 - 12:20

LUNCH BREAK: 12:20 - 12:42

CLASSES END: 2:45

OFFICE HOURS

8:00 AM - 4:00 PM



VISITORS TO THE SCHOOL

The main doors to the school remain unlocked during office hours from 8:00 – 3:15. Visitors are **required to check into the office** when entering the building. This is for everyone's safety. Thanks for your cooperation!



PARKING/TRAFFIC AT MITCHELL

This is a reminder to remain courteous and respectful in our parking lot.

Help keep our students safe by using the drop off zone for picking up and dropping off students only. Respect the 10km/h speed limit. Do not leave your car unattended in the drop-off zone or roundabout; if you need to come into the school, please park in a designated parking space at the west end of the school. Also, a reminder that there are no left turns permitted before and after school when leaving our parking lot. Thanks for your cooperation!



IN CASE OF ABSENCE OR LATE ARRIVAL

Please inform the school by telephone when your child will be late or absent due to illness or an appointment, etc.

Our Early Warning line - **604-668-6229** - is available 24 hours a day for parents to leave a message. Please clearly state your child's first and last name, division and reason for absence. If no prior notice of absence is received, we will call home to determine the reason for the absence. Students arriving after 8:45 a.m. are required to enter through the main doors and check-in at the office before going to class.



HOW WE LEARN AND WORK TOGETHER

The Board of Education recognizes its obligation to provide all members of our school district community with a positive climate and a safe, healthy environment.

As we learn and work together, we will...

- 1 Show respect for the diversity of the members of our school and district community.**
- 2 Behave in a safe, considerate and courteous manner.**
- 3 Not threaten, harass, intimidate or assault, in any way, any person within our school district community, through physical violence, print or electronic media.**
- 4 Not be in possession of weapons, dangerous articles, alcohol or illegal drugs while in school or work.**
- 5 Show respect and pride in our school district buildings and equipment through care and appropriate use of school district property.**
- 6 Respect the non smoking environment of our schools and school district facilities.**

Our expectations for how we learn and work together shall apply to everyone in our schools and at school functions.



The complete code of conduct
is available online at:

sd38.bc.ca/codeofconduct



RICHMOND
SCHOOL DISTRICT NO. 38

SUMMER LEARNING 2026

Join our fun and engaging summer learning programs where students can explore new interests, learn new skills, engage in non-credit enrichment academic courses or complete a full credit course.

IMPORTANT INFORMATION

- › Students register for the grade level that they will be attending in September 2026.
- › Note different registration dates for different grade groups.
- › Current Kindergarten to Grade 6 students may register for ONLY ONE Ministry-funded course and one/two fee-based camps.
- › Current Grade 7 and secondary students: up to THREE Ministry-funded courses.
- › **NEW!** Students attending a public school outside of Richmond School District and ALL independent school students MUST submit eligibility documents within 48 hours of registration. Failure to do so will result in course cancellation..

ELEMENTARY PROGRAMS

PROGRAM	DATES	TIMES	REGISTRATION BEGINS @ 7 PM	LOCATIONS (SUBJECT TO CHANGE)
ENRICHMENT (3-week programs)	July 8 - 24	9:00-11:45 am, or 12:15-3:00 pm	Wed April 8 (Gr 1-4) Thur April 9 (Gr 5-7)	Brighthouse Elementary Byng Elementary Tomsett Elementary
ENRICHMENT (4-week programs)	July 6 - 31	8:30-10:30 am, or 11:00 am-1:00 pm, or 1:30-3:30 pm	Wed April 8 (Gr 1-4) Thur April 9 (Gr 5-7)	Royd Secondary MacNail Secondary
CAMPS - fee based (3 week)	July 8 - 24	9:00-11:45 am, or 12:15-3:00 pm	Tues April 7	Brighthouse Elementary Byng Elementary Tomsett Elementary
CAMPS - fee based (4 week)	July 6 - 31	8:30-10:30 am, or 11:00 am-1:00 pm, or 1:30-3:30 pm	Tues April 7	Boyd Secondary MacNail Secondary

Eligible students may register for ONE enrichment course and/or one or more fee-based camps.

Students register for the grade level that they will be entering in September 2026.

SECONDARY PROGRAMS

PROGRAM	DATES	TIMES	REGISTRATION BEGINS @ 7 PM	LOCATIONS (SUBJECT TO CHANGE)
NON-CREDIT	July 6 - 31	8:45-10:45 am, or 11:15 am-1:15 pm, or 1:45-3:45 pm	Mon April 13 (Gr 8) Tues April 14 (Gr 9) Wed April 15 (Gr 10-11) Thurs April 16 (multi-grade)	Burnett Secondary
FULL CREDIT	July 2 - 31	8:00-11:45 am, or 12:15-4:00 pm	Wed May 6 (Gr 12) Thur May 7 (Gr 11) Fri May 8 (Gr 10)	McNair Secondary Steveston-London Secondary

Eligible students (including current Grade 7 students) may register for up to THREE secondary courses.



MITCHELL ELEMENTARY SCHOOL

FEBRUARY 2026

HOT LUNCHES

DATE RESTAURANT

Mon, February 2nd	Sushi Lovers
Tue, February 3rd	HellCrust Pizza
Fri, February 6th	Premier Central Kitchen
Mon, February 9th	Olive Pasta
Tue, February 10th	Pizza Hut
Thu, February 12th	Subway
Tue, February 17th	Fusion Feast Pizza
Fri, February 20th	Fukuroku
Mon, February 23rd	Olive Pasta
Tue, February 24th	Freshslice Pizza
Fri, February 27th	Fusion Feast

REMINDERS:

ORDERS ARE DUE 1 WEEK PRIOR TO HOT LUNCH DATE
WWW.MUNCHALUNCH.COM/SCHOOLS/MITCHELL

MITCHELL ELEMENTARY SCHOOL

MARCH 2026

HOT LUNCHES

DATE RESTAURANT

Mon, March 2nd Sushi Lovers
Tue, March 3rd HellCrust Pizza
Fri, March 6th Premier Central Kitchen
Mon, March 9th Olive Pasta
Tue, March 10th Pizza Hut
Fri, March 13th Just Poke
Mon, March 30th Olive Pasta
Tue, March 31st Freshslice Pizza

REMINDERS:

ORDERS ARE DUE 1 WEEK PRIOR TO HOT LUNCH DATE
WWW.MUNCHALUNCH.COM/SCHOOLS/MITCHELL