



MITCHELL ELEMENTARY SCHOOL

3800 #5 Rd, Richmond BC V6X 2T7

Phone 604-668-6225 | Early Warning 604-668-6229

Website: mitchell.sd38.bc.ca

Principal/Directrice: Mme V. Carrière - Vice Principal/Directrice Adjointe: Ms.T. Norman



Newsletter 11 - December, 2025

We had a very musical week, with Will Stroet's concert on Dec. 2 and our Band Concert on Dec. 4! We also hosted our trustee, Mrs. Alice Wong, for a tour, as well as our Assistant Superintendent, Ms. Maryam Naser for a visit. Visitors to our school often comment on the kindness of our students and staff, and this is always great to hear! **This is your reminder that the deadline to order free hot lunches for this coming Wednesday is Monday, Dec. 8 at noon, on Munchalunch!**

Upcoming Events/ Important Dates

Dec. 10 - Free Universal Hot Lunch

Dec. 11 - Div. 5 to 17 Winter Concert (1PM)

Dec. 18 - Learning Updates Live on MyEd

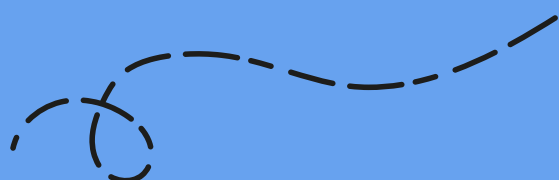
Dec. 19 - Last day before break - pyjama day!



Dec. 22 to Jan. 2 - WINTER BREAK

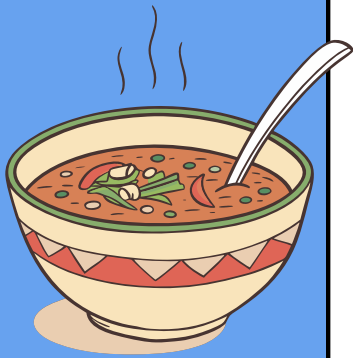
Winter Break - Early Departure/Late Return

If your child will be missing school before or after the winter break to go on extended holidays, please inform the office and the classroom teacher as soon as possible. We will provide you with a form to confirm your date of departure/return.



Are you curious to know more about Mitchell? Please go to our school website, where you'll find updates on our school goal and more at: mitchell.sd38.bc.ca

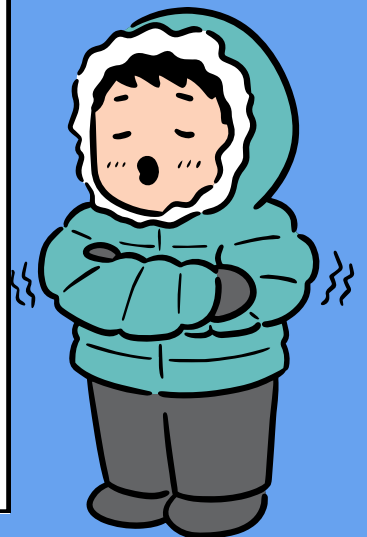
Universal Hot Lunch Program - Pilot starting next week!



Utilizing Feeding Futures as well as National School Food Program funding, the Richmond School District will be piloting a universal hot lunch program at selected elementary and secondary schools during the months of December and January. It is anticipated that a free lunch will be offered to all students at Mitchell Elementary Elementary School once each month. We are using the MunchaLunch ordering platform which families use to order other hot lunches from the school. Mme Val sent details by email on Thursday, Dec. 4.

Be prepared for the weather

We are reminding families to send their children to school with appropriate clothing for the weather. We go out rain or shine! We also remind families to send a full set of spare clothes in case students need to change. With the colder weather approaching, please ensure your children wear gloves and hats, too!



Winter Concert on Dec. 11 at 1:00PM

Our winter concert will be held on Thursday, Dec. 11, starting at 1:00PM, in the gym. We are asking families to enter from the outside gym doors. We will open doors at around 12:45. While you are here, please check out our Lost & Found, as it is bursting with items! Everything that remains on the last day before the break will be donated to a charity.





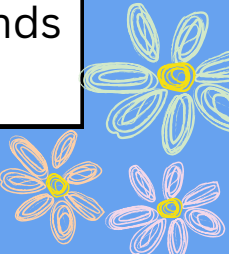
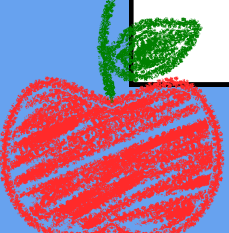
Kindergarten Registration for Next School Year **(For children born in 2021)**

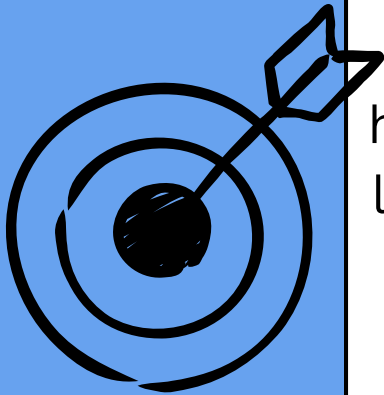
Richmond School District 38 is excited to welcome Kindergarten registration applications for children born in 2021, turning 5 in 2026. These children will begin Kindergarten in September 2026.

Online registration opens on November 1, 2025. Please visit our district's website: <https://sd38.bc.ca/student-registration/kindergarten-registration>, for more information about our online registration process, required documents, important dates, and FAQs. We encourage families to complete their registration within the Priority 1 registration window, which spans from November to January, to maximize their chances of securing a spot at their catchment school. All registration applications received any time during the Priority 1 registration period will receive placement decisions by February 6, 2026.

Finally, there will be a Kindergarten Information Evening for parents of students with disabilities and diverse abilities on Zoom held on November 5th from 5:30 – 6:30pm. A link to the Zoom is available on our District website <https://sd38.bc.ca/student-registration/kindergarten-registration>.

Thank you and please share this information with your friends and family who have Kindergarten aged children.





FSA's Coming Home

Grade 4 & 7 students should have brought home their FSA booklets, a results sheet and a letter from the Superintendent sometime this week. For any inquiries about your child's results, please consult with their classroom teacher.

Learning Updates Live on MyEd - December 18

Term 1 Learning Updates (reports) will be available on the MyEd Portal on December 18. No hard copies will be sent home. Please make sure to log in to MyEd before that to verify your access. Instructions on how to log in can be found on our school website at:
<https://mitchell.sd38.bc.ca/news/2023/12/myed-parent-portal>

Please print or download the learning update each term to keep for your own files. They will be removed from MyEd approximately 1-2 months after posted.



FIREBIRD CORNER

SCHOOL HOURS

CLASSES START: 8:45

RECESS: 10:10 - 10:25

LUNCH RECESS: 11:50 - 12:20

LUNCH BREAK: 12:20 - 12:42

CLASSES END: 2:45

OFFICE HOURS

8:00 AM - 4:00 PM



VISITORS TO THE SCHOOL

The main doors to the school remain unlocked during office hours from 8:00 – 3:15. Visitors are **required to check into the office** when entering the building. This is for everyone's safety. Thanks for your cooperation!



PARKING/TRAFFIC AT MITCHELL

This is a reminder to remain courteous and respectful in our parking lot.

Help keep our students safe by using the drop off zone for picking up and dropping off students only. Respect the 10km/h speed limit. Do not leave your car unattended in the drop-off zone or roundabout; if you need to come into the school, please park in a designated parking space at the west end of the school. Also, a reminder that there are no left turns permitted before and after school when leaving our parking lot. Thanks for your cooperation!



IN CASE OF ABSENCE OR LATE ARRIVAL

Please inform the school by telephone when your child will be late or absent due to illness or an appointment, etc.

Our Early Warning line - **604-668-6229** - is available 24 hours a day for parents to leave a message. Please clearly state your child's first and last name, division and reason for absence. If no prior notice of absence is received, we will call home to determine the reason for the absence. Students arriving after 8:45 a.m. are required to enter through the main doors and check-in at the office before going to class.



MITCHELL ELEMENTARY WINTER CONCERT

Raffle



\$5 FOR 2 TICKET
\$10 FOR 5 TICKETS
\$20 FOR 12 TICKETS

TICKETS CAN BE PURCHASED ON
MUNCHALUNCH SITE UNDER
"BUY RAFFLE TICKETS!"

VIP
SEATS
&

DOOR PRIZES
UP FOR GRABS



RAFFLE TICKETS
ON SALE

UNTIL
SUNDAY, DECEMBER 7TH

VIP SEAT
WINNERS

ANNOUNCED BY
MONDAY, DECEMBER 8TH

WINTER
CONCERT

THURSDAY,
DECEMBER 11TH
WITH MORE PRIZES TO BE
RAFFLED ON-SITE

FOR MORE INFORMATION, PLEASE CONTACT MITCHELLELEMENTARYPAC@OUTLOOK.COM

MITCHELL ELEMENTARY SCHOOL

NOVEMBER/DECEMBER HOT LUNCHES & TREAT DAYS



DATE RESTAURANT

Mon, November 3rd	Olive Pasta
Wed, November 5th	TCBY
Fri, November 7th	Just Poke
Fri, November 14th	Fukuroku
Mon, November 17th	Olive Pasta
Fri, November 21st	White Spot
Thu, November 27th	Pizza Hut
Mon, December 1st	Olive Pasta
Fri, December 5th	Taco Luis
Fri, December 12th	Fukuroku
Mon, December 15th	Olive Pasta
Fri, December 19th	Fusion Feast

REMINDERS:

ORDERS ARE DUE 1 WEEK PRIOR TO HOT LUNCH DATE
WWW.MUNCHALUNCH.COM/SCHOOLS/MITCHELL

**This is your link, to stay in the know with
what's going on @ Mitchell Elementary,
through
Mitchell Parent Advisory Council (PAC)**



**Mitchell Parent Advisory Council
PAC Portal**

