



MITCHELL ELEMENTARY SCHOOL

3800 #5 Rd, Richmond BC V6X 2T7

Phone 604-668-6225 | Early Warning 604-668-6229

Website: mitchell.sd38.bc.ca

Principal/Directrice: Mme V. Carrière - Vice Principal/Directrice Adjointe: Ms.T. Norman



Newsletter 3 - September 19, 2025

Today was our Terry Fox Run! Students persevered to continue Terry's marathon of hope around our school. We will continue to fundraise for the Terry Fox Foundation on School Cash Online, if you are interested in making a donation. We are continuing to welcome new families to our school community and I want to thank our staff, students and community at large for continuing to make newcomers to our school feel welcomed by showing true Firebird friendship and spirit!

Upcoming Events/ Important Dates

Sept. 22 - No school - PRO-D

Sept. 25 - Meet the Staff at 5PM

Sept. 29 - Orange Shirt Day

Sept. 30 - No School - Truth and Reconciliation Day

Oct. 1 to 7 - HUB Cycling program for grades 6/7

Oct. 10 - Picture Day



Sept. 25, 5PM-6PM
Classrooms will be open for families to meet their child's teacher and other staff members from our school.

At 5:40, we will gather in the gym for presentations. We hope to see you there!

Are you curious to know more about Mitchell? Please go to our school website, where you'll find updates on our school goal and more at: mitchell.sd38.bc.ca

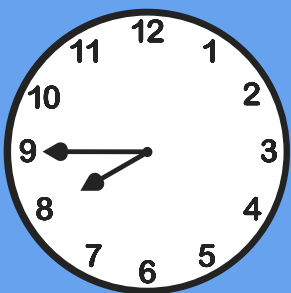
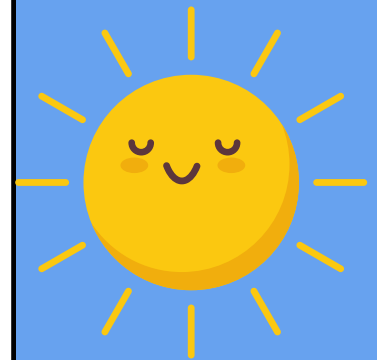


Medications at school

If your child has any allergies or medical conditions that require them to be given prescribed medication at school (Epipen, puffer, other medication), please ensure you complete a Request for Administration of Medication form and return it, along with the medication, to the school office. Thank you for working with us to ensure the health and safety of our students.

Be prepared for the weather

We are reminding families to send their children to school with appropriate clothing for the weather. We go out rain or shine! We also recommend for students to have sunscreen in their bags, as well as a hat for protection. Students should all have a refillable water bottle as well.



Learning Starts at 8:45

We are reminding families that learning/teaching starts at 8:45. This means that at 8:45, students should be in class with their teachers. We are asking families to make all efforts possible to arrive to school prior to this time. When students are late to school, not only do they lose out on instructional time, they also disrupt the learning of others upon their arrival.



Allergy Alert

Please be aware that Mitchell School has many students with severe, life-threatening allergies food allergies. Please help us limit the nut products entering our school, as the impact on a student can happen anywhere in the school. Please do not send food to school containing nuts or peanuts.

Vision Checks For Children

Did you know that all children a check-up by an optometrist before starting Kindergarten to enter school ready to learn? Teachers or other professionals may recommend vision check-ups for children at other ages when concerns arise. Vision checks are no longer provided at the school level. In BC, MSP covers yearly vision check-ups for children under age 19. For more information, on how to access this service, please go to: <https://www.vch.ca/en/vision-services-children>



Important Lunch Reminders

We are reminding families that it is always best to send lunch with your child in the morning, to avoid unnecessary worries and concerns for children. While we understand that sometimes, families need to adjust their plans at the last minute, we have noticed an increase in lunch drop-offs at school throughout the mornings and lunch break. Many children worry about their lunch not being at school on time, so it is always best to have it packed and ready to go to school with them in the morning. **Please note that food deliveries (Skip, Uber Eats, Door Dash, etc.) are not permitted at school.** We thank you for your understanding.

Backpack Buddies Program

As a part of our Feeding Futures initiatives, we are partnering with Backpack Buddies again this year (backpackbuddies.ca) to support some families with food security for the weekends. If your family would benefit from receiving food packages for your children every week, please email Mme Val at vcarriere@sd38.bc.ca to have us add you to our list. If you were part of the program last school year and no longer wish or need to be part of it, please also email Mme Val with this information.

Please note that students and/or their parents are responsible for carrying the food packages home. The school cannot deliver food packages to students' homes. Food packages are for children attending Mitchell only.



Grade 4 & 7 Foundational Skills Assessment (FSA)

Each year, the Ministry of Education requires school districts to conduct the Provincial Foundation Skills Assessment (FSA). This year, the FSAs will take place in October and November. The FSA is an annual province-wide assessment of all Grade 4 and 7 students' academic skills and is designed to provide parents, teachers, schools, school districts and the Ministry of Education and Child Care with important information on student progress in the foundation skills of Reading, Writing and Numeracy. All grade 4 & 7 families were sent a district letter on Sept. 11, outlining more details about the FSAs. Please reach out to school administration with any questions.

FIREBIRD CORNER

SCHOOL HOURS

CLASSES START: 8:45

RECESS: 10:10 - 10:25

LUNCH RECESS: 11:50 - 12:20

LUNCH BREAK: 12:20 - 12:42

CLASSES END: 2:45

OFFICE HOURS

8:00 AM - 4:00 PM



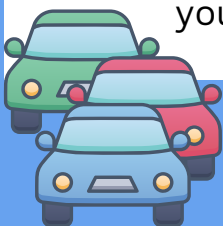
VISITORS TO THE SCHOOL

The main doors to the school remain unlocked during office hours from 8:00 – 3:15. Visitors are **required to check into the office** when entering the building. This is for everyone's safety. Thanks for your cooperation!



PARKING/TRAFFIC AT MITCHELL

Help keep our students safe by using the drop off zone for picking up and dropping off students only. Do not leave your car unattended in the drop-off zone or roundabout; if you need to come into the school, please park in a designated parking space at the west end of the school. Also, a reminder that there are no left turns permitted before and after school when leaving our parking lot. Thanks for your cooperation!



IN CASE OF ABSENCE OR LATE ARRIVAL

Please inform the school by telephone when your child will be late or absent due to illness or an appointment, etc.

Our Early Warning line - **604-668-6229** - is available 24 hours a day for parents to leave a message. Please clearly state your child's first and last name, division and reason for absence. If no prior notice of absence is received, we will call home to determine the reason for the absence. Students arriving after 8:45 a.m. are required to enter through the main doors and check-in at the office before going to class.



**This is your link, to stay in the know with
what's going on @ Mitchell Elementary,
through
Mitchell Parent Advisory Council (PAC)**



**Mitchell Parent Advisory Council
PAC Portal**

