



MITCHELL ELEMENTARY SCHOOL

3800 #5 Rd, Richmond BC V6X 2T7

Phone 604-668-6225 | Early Warning 604-668-6229

Website: mitchell.sd38.bc.ca

Principal/Directrice: Mme V. Carrière - Vice Principal/Directrice Adjointe: Ms.T. Norman



Newsletter 2 - September 12, 2025

We had a good first full week! Students seem a bit tired on this Friday, which is expected. I hope the weekend will be restful for everyone. Today, we had our Welcome Back assemblies with students. We talked about the Firebird values, reviewed some rules and expectations and watched a slideshow of things we've done over the past few weeks. We wish you all a wonderful weekend!

Upcoming Events/ Important Dates

Sept. 19 - Terry Fox Run at 1PM

Sept. 22 - No school - PRO-D

Sept. 25 - Meet the Staff at 5PM

Sept. 29 - Orange Shirt Day

Sept. 30 - No School - Truth and Reconciliation Day

Oct. 1 to 7 - HUB Cycling program for grades 6/7

Oct. 10 - Picture Day



Sept. 25, 5PM-6PM
Classrooms will be open for families to meet their child's teacher and other staff members from our school.

At 5:40, we will gather in the gym for presentations. We hope to see you there!

Are you curious to know more about Mitchell? Please go to our school website, where you'll find updates on our school goal and more at: mitchell.sd38.bc.ca

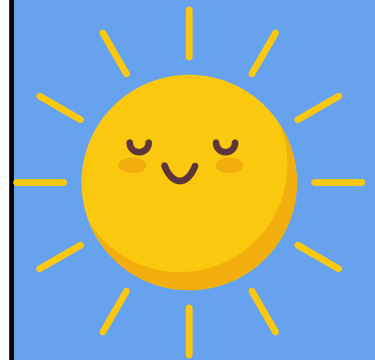


Medications at school

If your child has any allergies or medical conditions that require them to be given prescribed medication at school (Epipen, puffer, other medication), please ensure you complete a Request for Administration of Medication form and return it, along with the medication, to the school office. Thank you for working with us to ensure the health and safety of our students.

Be prepared for the weather

We are reminding families to send their children to school with appropriate clothing for the weather. We go out rain or shine! We also recommend for students to have sunscreen in their bags, as well as a hat for protection. Students should all have a refillable water bottle as well.



Terry Fox Run

Our yearly annual Terry Fox Run will be held next Friday afternoon (Sept. 19). All students will participate in this event, rain or shine. We are fundraising for the Terry Fox Foundation. You can send your child with a loonie or toonie to school next week, or you can donate via School Cash Online starting next week. For more information about Terry Fox and the Foundation, you can go to:

<https://terryfox.org/fr/>

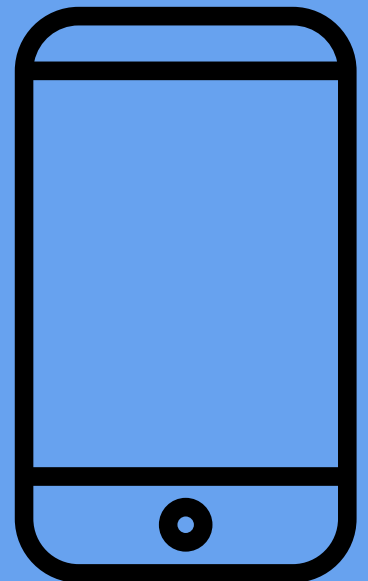


Allergy Alert

Please be aware that Mitchell School has many students with severe, life-threatening allergies food allergies. Please help us limit the nut products entering our school, as the impact on a student can happen anywhere in the school. Please do not send food to school containing nuts or peanuts.

Personal Device Usage Policy

You may remember that last school year, new policies regarding the use of personal devices by students were developed at all school districts across the province. The use of student personal digital devices should appropriate to a student's age and stage of development to support the work of educators in our school, and to avoid distractions during school hours. Please be reminded that students are required to keep their personal devices turned off and in their backpacks during school hours and school activities. If a child needs to contact their family during school hours, we ask that they use the phone available for this at the office. This policy was developed to support student learning. We thank you for your support with this.



Backpack Buddies Program

As a part of our Feeding Futures initiatives, we are partnering with Backpack Buddies again this year (backpackbuddies.ca) to support some families with food security for the weekends. If your family would benefit from receiving food packages for your children every week, please email Mme Val at vcarriere@sd38.bc.ca to have us add you to our list. If you were part of the program last school year and no longer wish or need to be part of it, please also email Mme Val with this information.

Please note that students and/or their parents are responsible for carrying the food packages home.

The school cannot deliver food packages to students' homes. Food packages are for children attending Mitchell only.



Breakfast Club

It's back! Mitchell's world-famous Breakfast Club will be held in the music room again this year! The club will open at 8:15 this year, on Mondays, Wednesdays and Fridays. Please enter through the doors by the music room.

We will have our first Monday session this coming Monday (Sept. 15).

FIREBIRD CORNER

SCHOOL HOURS

CLASSES START: 8:45

RECESS: 10:10 - 10:25

LUNCH RECESS: 11:50 - 12:20

LUNCH BREAK: 12:20 - 12:42

CLASSES END: 2:45

OFFICE HOURS

8:00 AM - 4:00 PM



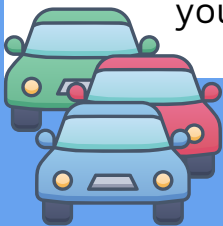
VISITORS TO THE SCHOOL

The main doors to the school remain unlocked during office hours from 8:00 – 4:00. Visitors are **required to check into the office** when entering the building. This is for everyone's safety. Thanks for your cooperation!



PARKING/TRAFFIC AT MITCHELL

Help keep our students safe by using the drop off zone for picking up and dropping off students only. Do not leave your car unattended in the drop-off zone or roundabout; if you need to come into the school, please park in a designated parking space at the west end of the school. Also, a reminder that there are no left turns permitted before and after school when leaving our parking lot. Thanks for your cooperation!



IN CASE OF ABSENCE OR LATE ARRIVAL

Please inform the school by telephone when your child will be late or absent due to illness or an appointment, etc.

Our Early Warning line - **604-668-6229** - is available 24 hours a day for parents to leave a message. Please clearly state your child's first and last name, division and reason for absence. If no prior notice of absence is received, we will call home to determine the reason for the absence. Students arriving after 8:45 a.m. are required to enter through the main doors and check-in at the office before going to class.





**Now Registering students from McNeely & Mitchell Elementary in our
licensed After School Care program for the 2025/2026 school year**

**Heron After School Care - located at Mitchell Elementary - is now Registering for
the 2025/2026 school year**

Accepting children from Mitchell Elementary and McNeely Elementary (children from McNeely will have Heron staff do a supervised “safe walk” from McNeely to Mitchell Elementary)

Ages K - Grade 7

Times: 2:45 - 7:00, Monday to Friday, as well as all early dismissal dates.

Cost: Kindergarten aged students - 311.00 / month
Grade 1 - 5 - 516 / month

We accept ACCB - if your family earns less than 111 000 / year, you may be eligible for ACCB, which is a child care subsidy to reduce your tuition payment.

Professional days, Winter break / spring break and summer break daycamps all available at an additional cost.

Contact **registration@ssocc.ca** to enrol; visit ssocc.ca for more information about our programs.

**This is your link, to stay in the know with
what's going on @ Mitchell Elementary,
through
Mitchell Parent Advisory Council (PAC)**



**Mitchell Parent Advisory Council
PAC Portal**

