



MITCHELL ELEMENTARY SCHOOL

3800 #5 Rd, Richmond BC V6X 2T7

Phone 604-668-6225 | Early Warning 604-668-6229

Website: mitchell.sd38.bc.ca

Principal/Directrice: Mme V. Carrière - Vice Principal/Directeur Adjoint: Mr. K. Narbett



Newsletter 25 - June 2, 2025

Last week was very busy at Mitchell: Track and Field Meet, Talent Show, Welcome to Kindergarten AND Bandorama! WOW! Our students impressed us all by showcasing their various talents in athletics and performing arts and by being great leaders during all events. This week, we have Sports Day/Families' Appreciation Day on Thursday.

Please remember to have your child dress up in their team's colour as much as possible. **Please also remember that school will end at 1:45 on that day.** See you there!

Upcoming Events/ Important Dates

June 5 - Sports Day/Families' Appreciation Day -

School ends at 1:45 PM

June 12 - Year-End Concert -

For Divisions 5 to 17 only

June 13 - PAC Movie Night

June 24 - K/1 Graduation --- Gym doors open at 1:00 PM

June 25 - Grade 7 Farewell Ceremony --- Gym doors open at 8:45

Vacation/Extended Absence

If you are planning for your child to be away for vacation or extended absence, please inform your classroom teacher and the office. Many teachers are preparing end of year field trips and special activities, so knowing who will and won't be there helps them prepare and plan accordingly.

Are you curious to know more about Mitchell? Please go to our school website, where you'll find updates on our school goal and more at: mitchell.sd38.bc.ca



Safe drop-offs and pick-ups

We have noticed that many families are dropping off and picking up on Greenland, by the field at the back at school. We are reminding everyone that safety is our top priority. Please do not double-park in the street, or block the street or entrances to neighbouring houses. If you must park, please make sure to do so in a designated area.

Be prepared for the weather

We are reminding families to send their children to school with appropriate clothing for the weather. We go out rain or shine! We also recommend for students to have sunscreen in their bags, as well as a hat for protection. Students should all have a refillable water bottle as well.



Before and after school supervision

With the warmer weather here, many of our students choose to stay on school grounds after school hours to play. While we are pleased to see our students getting some fresh air and exercise, we are concerned about safety when students are not supervised. Therefore, we are recommending that parents/guardians supervise their children if they stay after school hours, to ensure safe play.



E-Bikes and E-Scooters

We have noticed that some parents/guardians and students use e-bikes and e-scooters to get to school. While these are great eco-friendly vehicles they have to be used in a safe way, especially around pedestrian.

Please note that e-bikes and e-scooters are not allowed on sidewalks. We are asking you to dismount and walk your bikes and scooters prior to entering the sidewalk. This is for everyone's safety.

There are several guidelines to follow when using such vehicles. You will find Richmond's guidelines and policies at:

<https://www.richmond.ca/parks-recreation/parks-trails-cycling/cycling/e-scooter.htm>

Please note that the City can issue a fine to anyone using e-bikes and e-scooters on sidewalks.

You can also find the province's guide to "E-bikes rules of the road" at this website:

<https://www2.gov.bc.ca/gov/content/transportation/driving-and-cycling/cycling/e-bike-rules-of-the-road>.

You will find the province's guide to e-scooters at this website:

<https://www2.gov.bc.ca/gov/content/transportation/transportation-environment/active-transportation/scooter/safety>

Please make note that "a person under 16 cannot ride an electric kick scooter, nor can their parent or guardian knowingly permit it." Therefore, we cannot allow students to use e-scooters on school property.

We thank you for your cooperation and understanding.

FIREBIRD CORNER

SCHOOL HOURS

CLASSES START: 8:45

RECESS: 10:10 - 10:25

LUNCH RECESS: 11:50 - 12:20

LUNCH BREAK: 12:20 - 12:42

CLASSES END: 2:45

OFFICE HOURS

8:00 AM - 4:00 PM



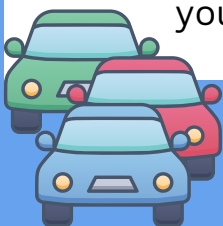
VISITORS TO THE SCHOOL

The main doors to the school remain unlocked during office hours from 8:00 – 4:00. Visitors are **required to check into the office** when entering the building. This is for everyone's safety. Thanks for your cooperation!



PARKING/TRAFFIC AT MITCHELL

Help keep our students safe by using the drop off zone for picking up and dropping off students only. Do not leave your car unattended in the drop-off zone or roundabout; if you need to come into the school, please park in a designated parking space at the west end of the school. Also, a reminder that there are no left turns permitted before and after school when leaving our parking lot. Thanks for your cooperation!



IN CASE OF ABSENCE OR LATE ARRIVAL

Please inform the school by telephone when your child will be late or absent due to illness or an appointment, etc.

Our Early Warning line - **604-668-6229** - is available 24 hours a day for parents to leave a message. Please clearly state your child's first and last name, division and reason for absence. If no prior notice of absence is received, we will call home to determine the reason for the absence. Students arriving after 8:45 a.m. are required to enter through the main doors and check-in at the office before going to class.



ÉCOLE MITCHELL ELEMENTARY

Sports Day & Family Appreciation Day 2025

JUNE 5, 2025

EARLY DISMISSAL AT 1:45



SPECIAL NOTES:

- Parents or guardians are encouraged to attend.
- Dress your kids in comfortable sports attire, in their team colors if possible.
- Send water bottle, hat and sunscreen.
- Pizza lunch provided by Mitchell PAC for all students!
- Muffins and coffee free for parents/guardians!

Join us all day or just for a muffin in the morning!





**Now Registering students from McNeely & Mitchell Elementary in our
licensed After School Care program for the 2025/2026 school year**

**Heron After School Care - located at Mitchell Elementary - is now Registering for
the 2025/2026 school year**

Accepting children from Mitchell Elementary and McNeely Elementary (children from McNeely will have Heron staff do a supervised “safe walk” from McNeely to Mitchell Elementary)

Ages K - Grade 7

Times: 2:45 - 7:00, Monday to Friday, as well as all early dismissal dates.

Cost: Kindergarten aged students - 311.00 / month
Grade 1 - 5 - 516 / month

We accept ACCB - if your family earns less than 111 000 / year, you may be eligible for ACCB, which is a child care subsidy to reduce your tuition payment.

Professional days, Winter break / spring break and summer break daycamps all available at an additional cost.

Contact **registration@ssocc.ca** to enrol; visit **ssocc.ca** for more information about our programs.