



MITCHELL ELEMENTARY SCHOOL

3800 #5 Rd, Richmond BC V6X 2T7

Phone 604-668-6225 | Early Warning 604-668-6229

Website: mitchell.sd38.bc.ca

Principal/Directrice: Mme V. Carrière - Vice Principal/Directeur Adjoint: Mr. K. Narbett



Newsletter 22 - April 25 2025

Happy Friday! We hope you have enjoyed the beautiful we have been having! We notice many students are biking or scooting to school. This is wonderful! Please make sure to have a safety talk with your children before they go out with their bikes and scooters. Are they wearing a helmet? Are they crossing streets safely? Staying out of traffic? This way, everyone will be as safe as possible.

Upcoming Events/ Important

April 25 - Reports published on MyEd

April 28 - Federal Election Day

April 29 - BC Lions Presentation

May 9 - Reunification Drill

May 16 - Pro-D - No School

May 19 - NO SCHOOL

May 26 - Gr.4-7 Track Meet at Minoru

Vacation/Extended Absence

If you are planning for your child to be away for vacation or extended absence, please inform your classroom teacher and the office. Many teachers are preparing end of year field trips and special activities, so knowing who will and won't be there helps them prepare and plan accordingly.

Are you curious to know more about Mitchell? Please go to our school website, where you'll find updates on our school goal and more at: mitchell.sd38.bc.ca

ACCESS TO MYED FOR LEARNING UPDATES

Please see the reminder below on how to access your child's formal learning update (report card) once they are posted. We strongly recommend that you go online prior to that to make sure you can access the site.

Term 2 Learning updates will be available online only. No paper copies will be sent home. They will be published on April 25, 2025.

At Mitchell Elementary and across the District, we access children's school information directly online. SD38 has initiated the MyEducation BC PARENT PORTAL which will allow parents and/or guardians to access attendance, term grades, report cards and other information on their child(ren). Each parent/guardian have their own separate account.

You would have received an email a while ago from "sysadmin@myeducation.gov.bc.ca" with your login ID and temporary password. Instructions on how to login and navigate the Parent Portal can be found on our school website.

Access the Parent Portal at: <https://www.myeducation.gov.bc.ca/aspen/logon.do>

- o The first login must be done from a workstation, laptop or computer. Do not use an iPad, tablet, or cell phone. After the initial log in you may use any device to access your parent portal account.
 - o Enter the login ID and password provided in the MyEd BC email.
- o The first time you log on to your account you will be asked to change your password.

**** Please print or download the report card each term as they will be removed from MyEd approximately one month after being posted. ****

Account Problems?

Accounts have been created using email addresses previously provided to the office. If you did not provide your email address or need to update your address, please send an email to mitchell@sd38.bc.ca.

If you have issues logging into MyEd please send an email to the District MyEd Support Team at the following email address: MyEdParentPortal@sd38.bc.ca In the subject line please put Parent Portal, and in the message, include the following: Student's Full Name, Pupil #, Parent/Guardian Name and email address.

Security

MyEducation BC is a secure student information system used in most school districts in the province of BC. Security is guided by the rules and regulations of the School Act and Freedom of Information and Protection of Privacy Act (FOIPPA). If you have any additional questions, please contact our school office at 604-668-6225.

Reunification Drill - Call to All

On May 9, we will conduct a reunification drill. This means that we would like to practice reuniting students with families in the event of a critical incident such as an earthquake. If you are available to pick up your child(ren) earlier that day, at around 2PM, please reach out to Mr.Narbett at knarbett@sd38.bc.ca

Shoe Donation

We received a shoe donation! Please let us know if your child could use a pair of shoes in the following sizes, please email at mitchell@sd38.bc.ca. We have a limited quantity and it will be first come, first serve. All shoes look like the picture.

Sizes (all in Youth): 6 Narrow, 4 Wide, 5.5 Wide and 3.5 Regular



Lost & Found

Our Lost & Found tables are very full. Please pop by and pick up items that belong to your family. This is also a good reminder to label all your child's items so that they may be returned to them when found.



FIREBIRD CORNER

SCHOOL HOURS

CLASSES START: 8:45

RECESS: 10:10 - 10:25

LUNCH RECESS: 11:50 - 12:20

LUNCH BREAK: 12:20 - 12:42

CLASSES END: 2:45

OFFICE HOURS

8:00 AM - 4:00 PM



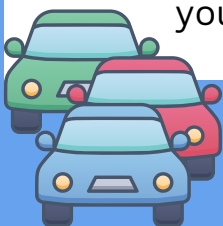
VISITORS TO THE SCHOOL

The main doors to the school remain unlocked during office hours from 8:00 – 4:00. Visitors are **required to check into the office** when entering the building. This is for everyone's safety. Thanks for your cooperation!



PARKING/TRAFFIC AT MITCHELL

Help keep our students safe by using the drop off zone for picking up and dropping off students only. Do not leave your car unattended in the drop-off zone or roundabout; if you need to come into the school, please park in a designated parking space at the west end of the school. Also, a reminder that there are no left turns permitted before and after school when leaving our parking lot. Thanks for your cooperation!



IN CASE OF ABSENCE OR LATE ARRIVAL

Please inform the school by telephone when your child will be late or absent due to illness or an appointment, etc.

Our Early Warning line - **604-668-6229** - is available 24 hours a day for parents to leave a message. Please clearly state your child's first and last name, division and reason for absence. If no prior notice of absence is received, we will call home to determine the reason for the absence. Students arriving after 8:45 a.m. are required to enter through the main doors and check-in at the office before going to class.





CELEBRATE EARTH WEEK

<https://www.richmond.ca/culture/calendar/special-events/earthweek.htm>



The City of Richmond's 2025 Earth Week celebrations are April 22 to 29! They will be a fun and educational way for families to engage in sustainable environmental practices, learn about nature and local ecology, and beautify the community.

Consider how you are disposing of waste - what can you recycle and compost instead?

City of Richmond has a resource: How Do I Recycle This Properly?



For more activities about what to do with waste, visit



Earthday.org invites individuals to sustainably shop for clothes by considering the following:

1. Shop secondhand first
2. Buy fewer clothes
3. Invest only in clothes you really like and need
4. Shop locally
5. Go natural

<https://www.earthday.org/toolkit-how-to-shop-for-your-clothes/>



Engage with nature through some fun biodiversity scavenger hunts from Sierra Club BC.



Kindergarten



Grade 1 and 2



Grade 3 - 5

RICHMOND
SCHOOL DISTRICT NO.38



**Now Registering students from McNeely & Mitchell Elementary in our
licensed After School Care program for the 2025/2026 school year**

**Heron After School Care - located at Mitchell Elementary - is now Registering for
the 2025/2026 school year**

Accepting children from Mitchell Elementary and McNeely Elementary (children from McNeely will have Heron staff do a supervised “safe walk” from McNeely to Mitchell Elementary)

Ages K - Grade 7

Times: 2:45 - 7:00, Monday to Friday, as well as all early dismissal dates.

Cost: Kindergarten aged students - 311.00 / month
Grade 1 - 5 - 516 / month

We accept ACCB - if your family earns less than 111 000 / year, you may be eligible for ACCB, which is a child care subsidy to reduce your tuition payment.

Professional days, Winter break / spring break and summer break daycamps all available at an additional cost.

Contact **registration@ssocc.ca** to enrol; visit **ssocc.ca** for more information about our programs.