



MITCHELL ELEMENTARY SCHOOL

3800 #5 Rd, Richmond BC V6X 2T7

Phone 604-668-6225 | Early Warning 604-668-6229

Website: [mitchell.sd38.bc.ca](http://mitchell.sd38.bc.ca)

Principal/Directrice: Mme V. Carrière - Vice Principal/Directeur Adjoint: Mr. K. Narbett

## Newsletter 17 - February 28, 2025

We hope that you enjoyed exploring your child's learning during conferences. It is always a wonderful opportunity to have insight on what is happening between our walls. Your presence to these conferences makes a big difference! Through sharing their learning with their family, students feel supported, cared for and proud of their achievements. Thank you for carving out time out of your busy schedules to visit us. We also enjoyed the Scholastic Book Fair; I am sure many of you have added new books to your home library! As Ramadan is beginning today, we wish all our observing families a serene moment in the weeks ahead.

### Upcoming Events/ Important Dates

March 7 - PAC Meeting at 8:45

March 7 - PAC Movie Night

March 7 - Deadline for Camp Jubilee waiver (grades 6 & 7)

**March 17 - 28 - Spring Break**

March 31 - Return from Spring Break

April 15 - 17 Grade 6/7 Camp

### **EXTENDED ABSENCES/VACATION**

If your family is planning an early departure or a late return from Spring Break, please inform the office and your classroom teacher at your earliest convenience. Depending on the length of the absence, the office may require you to fill an extended absence form.



Are you curious to know more about Mitchell? Please go to our school website, where you'll find updates on our school goal and more at: [mitchell.sd38.bc.ca](http://mitchell.sd38.bc.ca)



## **Provincial Student/Families Learning Survey 2024/2025**

The Provincial Student Learning Survey is unique in its scope, size and usefulness to schools. It gathers information from parents/guardians/caregivers, teachers, and students on topics related to school environment, safety, and achievement. The information is used for planning in individual schools and provides a district and provincial perspective.

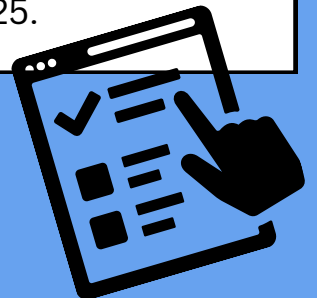
In February, the Student Learning Survey was administered to students in grades 4 and 7. We encourage parents/guardians/caregivers to participate in this survey, as the results are helpful in identifying and celebrating current strengths, as well as determining where the school needs to focus improvement. The surveys contain standard questions for the Province – in addition, questions from the school and/or district that focus on local conditions or issues may be included.

The survey can be completed electronically and can be accessed on the Internet at

<https://www2.gov.bc.ca/gov/content/education-training/k-12/support/student-learning-survey>.

Any computer or mobile device with an Internet connection can be used, and access to the e-survey is simple and secure. The survey can be accessed through the link and by clicking on Take the Survey. On the login page, click on the Parents icon, and then select the school district and school name where your child attends school.

The e-survey site will be open until May 2, 2025.





### **VANCOUVER SUN RUN**

This year we will be entering a team in the Vancouver SunRun on Sunday April 27th. If you would like to join us, please follow the link below. Deadline to register is March 14.

Team name: Mitchell Firebirds

Password: CJMZGA



### **DRESSING FOR THE WEATHER**

This is a reminder that children at Mitchell will be going outside rain or shine during recess and lunch breaks. We believe that being able to go outside, breathe lots of fresh oxygen and move around is very good for children's well-being and ability to learn. A well-known Norwegian quote tells us "There is no bad weather, only bad clothing." With this in mind, please make sure your child has adequate clothing for outside, even in the rain. Please provide them with a change of socks and shoes, rainproof coat with hood or hat and possibly an umbrella. Mitchell has a lending library as well, for emergencies.



### **SNACKS AND LUNCHES**

We are reminding families to please send students to school with a nutritious snack and a lunch. If your child will require a spoon or fork to eat, please provide this as well. The school will only provide these items in case of emergency.

# FIREBIRD CORNER

## SCHOOL HOURS

**CLASSES START:** 8:45

**RECESS:** 10:10 - 10:25

**LUNCH RECESS:** 11:50 - 12:20

**LUNCH BREAK:** 12:20 - 12:42

**CLASSES END:** 2:45

## OFFICE HOURS

8:00 AM - 4:00 PM



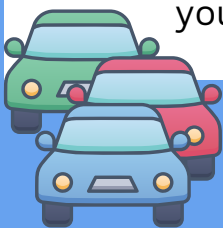
## VISITORS TO THE SCHOOL

The main doors to the school remain unlocked during office hours from 8:00 – 4:00. Visitors are **required to check into the office** when entering the building. This is for everyone's safety. Thanks for your cooperation!



## PARKING/TRAFFIC AT MITCHELL

Help keep our students safe by using the drop off zone for picking up and dropping off students only. Do not leave your car unattended in the drop-off zone or roundabout; if you need to come into the school, please park in a designated parking space at the west end of the school. Also, a reminder that there are no left turns permitted before and after school when leaving our parking lot. Thanks for your cooperation!



## IN CASE OF ABSENCE OR LATE ARRIVAL

Please inform the school by telephone when your child will be late or absent due to illness or an appointment, etc.

Our Early Warning line - **604-668-6229** - is available 24 hours a day for parents to leave a message. Please clearly state your child's first and last name, division and reason for absence. If no prior notice of absence is received, we will call home to determine the reason for the absence. Students arriving after 8:45 a.m. are required to enter through the main doors and check-in at the office before going to class.





**Now Registering students from McNeely & Mitchell Elementary in our licensed After School Care program for the 2025/2026 school year**

---

**Heron After School Care - located at Mitchell Elementary - is now Registering for the 2025/2026 school year**

Accepting children from Mitchell Elementary and McNeely Elementary (children from McNeely will have Heron staff do a supervised “safe walk” from McNeely to Mitchell Elementary)

**Ages K - Grade 7**

**Times:** 2:45 - 7:00, Monday to Friday, as well as all early dismissal dates.

**Cost:** Kindergarten aged students - 311.00 / month  
Grade 1 - 5 - 516 / month

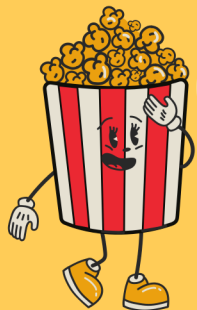
**We accept ACCB** - if your family earns less than 111 000 / year, you may be eligible for ACCB, which is a child care subsidy to reduce your tuition payment.

Professional days, Winter break / spring break and summer break daycamps all available at an additional cost.

Contact **registration@ssocc.ca** to enrol; visit [ssocc.ca](http://ssocc.ca) for more information about our programs.

MITCHELL ELEMENTARY PAC PRESENTS

# SPRING MOVIE NIGHT



**FRIDAY, MARCH 7TH**

DOORS OPEN @ 530PM | MOVIE STARTS @ 600PM

**MOVIE PLAYING:  
THE GARFIELD MOVIE**

**TICKETS \$2 | ENTRY FEE @ DOOR**

**PARENTS/GUARDIANS MUST ACCOMPANY STUDENTS**

ONSITE CONCESSION (PIZZA, CHIPS, JUICE, WATER)

GYM FLOOR SEATING - PICNIC BLANKETS, CUSHIONS, ETC. WELCOME

VOLUNTEERS NEEDED FOR TICKETS @ DOOR AND CONCESSION - PLEASE CONTACT MITCHELLELEMENTARYPAC@OUTLOOK.COM