



MITCHELL ELEMENTARY SCHOOL

3800 #5 Rd, Richmond BC V6X 2T7

Phone 604-668-6225 | Early Warning 604-668-6229

Website: mitchell.sd38.bc.ca

Principal/Directrice: Mme V. Carrière - Vice Principal/Directeur Adjoint: Mr. K. Narbett



Newsletter 14 - January 31, 2025

What a wonderful week this was at Mitchell! We had a great time on Wednesday with our Lunar New Year Parade. Several classes also worked on projects to learn more about that day. Next week, we have **Global Play Day on Feb. 5** and our **Carnaval Parade on Feb. 7**.

We are noticing an uptick in illness at school. If your child has a fever, has had diarrhea or has been vomiting in the previous 24 hours, please keep them at home. If your child is unable to participate actively in all regular school activities due to a cold or flu, they should also stay at home to rest until they are feeling better.

Upcoming Events/ Important Dates

Feb. 5 - Global Play Day

Feb. 7 - Carnaval Parade at 10:30

Feb. 13 - Band Concert at 10:30
Div. 1, 2, 3 & 4 families invited

Feb. 14 - Pro-D (NO SCHOOL)

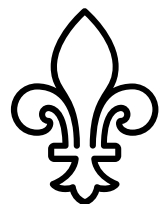
Feb. 17 - Family Day (NO SCHOOL)

Feb. 24 to 27 - Scholastic Book Fair

Feb. 26/27 - Early Dismissal -
Conferences

CARNAVAL PARADE - FEB. 7

Join us for the Mitchell Carnaval Parade on February 7, at 10:30, around the traffic circle! You'll have a chance to hear our band, see Bonhomme and Bûcheron and dance to some traditional French-Canadian music.



Are you curious to know more about Mitchell? Please go to our school website, where you'll find updates on our school goal and more at: mitchell.sd38.bc.ca



WEATHER CLOSURES

In the event where weather would make it impossible for school to be open, the Superintendent of Schools will make the decision to close schools by 6:30 a.m. This information will be shared on the district's website as well as through the district's social media. In the event of a closure, Mitchell's administration will notify families by email as early as possible.

ABSENCES

While it is always a good idea to inform your child's teacher of their planned absence, we are reminding families that **your first call should be to the school office**. To report any absence, early departure or late arrival, please call our Early Warning Line at:
604-668-6229



DRESSING FOR THE WEATHER

This is a reminder that children at Mitchell will be going outside rain or shine during recess and lunch breaks. We believe that being able to go outside, breathe lots of fresh oxygen and move around is very good for children's well-being and ability to learn. A well-known Norwegian quote tells us "There is no bad weather, only bad clothing." With this in mind, please make sure your child has adequate clothing for outside, even in the rain. Please provide them with a change of socks and shoes, rainproof coat with hood or hat and possibly an umbrella. Mitchell has a lending library as well, for emergencies.



SNACKS AND LUNCHES

We are reminding families to please send students to school with a nutritious snack and a lunch. If your child will require a spoon or fork to eat, please provide this as well. The school will only provide these items in case of emergency.





Provincial Student/Families Learning Survey 2024/2025

The Provincial Student Learning Survey is unique in its scope, size and usefulness to schools. It gathers information from parents/guardians/caregivers, teachers, and students on topics related to school environment, safety, and achievement. The information is used for planning in individual schools and provides a district and provincial perspective.

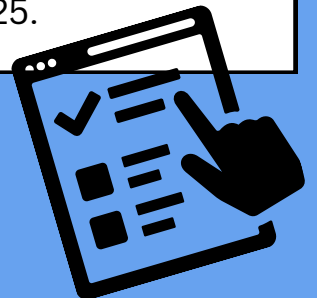
In February, the Student Learning Survey will be administered to students in grades 4 and 7. We encourage parents/guardians/caregivers to participate in this survey, as the results are helpful in identifying and celebrating current strengths, as well as determining where the school needs to focus improvement. The surveys contain standard questions for the Province – in addition, questions from the school and/or district that focus on local conditions or issues may be included.

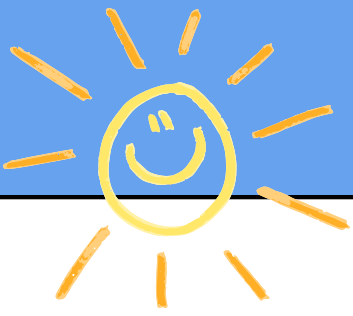
The survey can be completed electronically and can be accessed on the Internet at

<https://www2.gov.bc.ca/gov/content/education-training/k-12/support/student-learning-survey>.

Any computer or mobile device with an Internet connection can be used, and access to the e-survey is simple and secure. The survey can be accessed through the link and by clicking on Take the Survey. On the login page, click on the Parents icon, and then select the school district and school name where your child attends school.

The e-survey site will be open until May 2, 2025.





K REGISTRATION OPENED NOVEMBER 1

Richmond School District 38 is excited to welcome Kindergarten registration applications for children born in 2020, turning 5 in 2025. These children will begin Kindergarten in September 2025. Online registration opens on November 1, 2024.

Please visit our website <https://sd38.bc.ca/student-registration/kindergarten-registration> for more information about our online registration process, required documents, important dates, and FAQs.

Priority 1 registration is now closed. Families will hear from schools by February 7, 2025. District Program Options (EFI, LFI, Montessori) also closed on January 17, and families will be notified about placement by February 4. Priority 2 registration is now open until May 9, 2025.

First round transfer applications open on February 3 and closes February 28.

Applications can be found on the district's website [here](#).

Applications should be emailed to the desired school. Transfer decisions will be emailed to families by March 10, 2025.

Videos detailing Kindergarten registration have been made available on our District website, providing new parents with guidance on the registration process, English Language Learner (ELL) assessments, and District Program Options (Early French Immersion and Montessori). These videos are available in English and Mandarin.

Please view the videos at <https://sd38.bc.ca/student-registration/kindergarten-registration>.

Thank you and please share this information with your friends and family who have Kindergarten aged children!



FIREBIRD CORNER

SCHOOL HOURS

CLASSES START: 8:45

RECESS: 10:10 - 10:25

LUNCH RECESS: 11:50 - 12:20

LUNCH BREAK: 12:20 - 12:42

CLASSES END: 2:45

OFFICE HOURS

8:00 AM - 4:00 PM



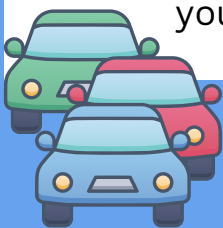
VISITORS TO THE SCHOOL

The main doors to the school remain unlocked during office hours from 8:00 – 4:00. Visitors are **required to check into the office** when entering the building. This is for everyone's safety. Thanks for your cooperation!



PARKING/TRAFFIC AT MITCHELL

Help keep our students safe by using the drop off zone for picking up and dropping off students only. Do not leave your car unattended in the drop-off zone or roundabout; if you need to come into the school, please park in a designated parking space at the west end of the school. Also, a reminder that there are no left turns permitted before and after school when leaving our parking lot. Thanks for your cooperation!



IN CASE OF ABSENCE OR LATE ARRIVAL

Please inform the school by telephone when your child will be late or absent due to illness or an appointment, etc.

Our Early Warning line - **604-668-6229** - is available 24 hours a day for parents to leave a message. Please clearly state your child's first and last name, division and reason for absence. If no prior notice of absence is received, we will call home to determine the reason for the absence. Students arriving after 8:45 a.m. are required to enter through the main doors and check-in at the office before going to class.





THE UNIVERSITY OF BRITISH COLUMBIA

Faculty of Education

Department of Curriculum & Pedagogy



For Curious and Inquiring Minds



Photo credits left and right: *Paul Joseph | UBC Brand and Marketing*

Virtual Family Math Fair

Saturday Feb 22, 2025, 10:00am - 11:30am PT

Virtual through Zoom with

UBC Faculty of Education Graduate Students and Teacher Candidates



Photo credits above: *Janice Novakowski*

Sat Feb 22, 2025

10:00am-11:30am PT



All Welcome: Families, Teachers, Parents
Event FREE! | Registration Required

For more info and to register:



RICHMOND SCHOOL DISTRICT

PRO-D DAYS SPECIAL

Guests can receive up to **3 complimentary child/youth tickets** with the purchase of 1 paid adult ticket

JAN 24 JAN 27 FEB 14 MAY 16

FOR MORE INFORMATION:
6111 River Road, Richmond BC
778.296.1400 | olympicexperience.ca



Proudly sponsored by
Scotiabank.