



MITCHELL ELEMENTARY SCHOOL

3800 #5 Rd, Richmond BC V6X 2T7

Phone 604-668-6225 | Early Warning 604-668-6229

Website: [mitchell.sd38.bc.ca](http://mitchell.sd38.bc.ca)

Principal/Directrice: Mme V. Carrière - Vice Principal/Directeur Adjoint: Mr. K. Narbett



## Newsletter 12 - January 17, 2025

This week was fun and exciting at Mitchell! We enjoyed an incredible performance by the Dancers of Damelahamid on Thursday morning. I hope that your children told you about it! On Friday, we enjoyed fun Math games at the Math Festival in our gym.

**Next week is short as there is a Pro-D on Friday.** We will host another fun performance on the 22nd: the Dufflebag Theatre group will present “The Three Musketeers”.

### Upcoming Events/ Important Dates

Jan. 22 - Dufflebag Theatre Performance

Jan. 24 - PRO-D (NO SCHOOL)

Jan. 29 - Lunar New Year

Feb. 7 - Carnival Parade at 10:30

Feb. 14 - Pro-D (NO SCHOOL)

Feb. 17 - Family Day (NO SCHOOL)

Feb. 24 to 27 - Scholastic Book Fair

Feb. 26/27 - Early Dismissal - Conferences

### Zoom Parent Session

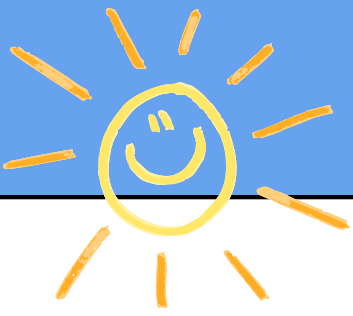
We encourage you to participate to this learning opportunity.

Tuesday, January 21. “**Cellphones: What’s Healthy, What’s Not, and What We Can Do to Support Our Kids**” will be presented by Hannah Beach on Zoom from 6:30 – 8:00 p.m. This session is open to all parents and staff!

Link:

<https://sd38.bc.ca/news/2024-10-16/cellphones-whats-healthy-whats-not-and-what-we-can-do-support-our-kids>

Are you curious to know more about Mitchell? Please go to our school website, where you’ll find updates on our school goal and more at: [mitchell.sd38.bc.ca](http://mitchell.sd38.bc.ca)



## **K REGISTRATION OPENED NOVEMBER 1**

Richmond School District 38 is excited to welcome Kindergarten registration applications for children born in 2020, turning 5 in 2025. These children will begin Kindergarten in September 2025. Online registration opens on November 1, 2024.

Please visit our website <https://sd38.bc.ca/student-registration/kindergarten-registration> for more information about our online registration process, required documents, important dates, and FAQs.

**We encourage families to complete their registration within the Priority 1 registration window, which spans from November 1, 2024 to January 17, 2024,** to maximize their chances of securing a spot at their catchment school. All registration applications received any time during the Priority 1 registration period will receive placement decisions by February 7, 2025.

Videos detailing Kindergarten registration have been made available on our District website, providing new parents with guidance on the registration process, English Language Learner (ELL) assessments, and District Program Options (Early French Immersion and Montessori). These videos are available in English and Mandarin. Please view the videos at <https://sd38.bc.ca/student-registration/kindergarten-registration>.

Finally, there will be a Kindergarten Information Evening for parents of students with disabilities and diverse abilities on Zoom held on November 6th from 6:30 – 7:30pm. A link to the Zoom is available on our District website <https://sd38.bc.ca/student-registration/kindergarten-registration>. There will also be an info session about district program options on November 26 (see flyer below).

Thank you and please share this information with your friends and family who have Kindergarten aged children!



## DRESSING FOR THE WEATHER

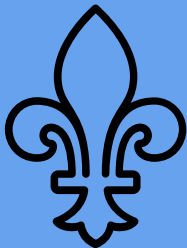


This is a reminder that children at Mitchell will be going outside rain or shine during recess and lunch breaks. We believe that being able to go outside, breathe lots of fresh oxygen and move around is very good for children's well-being and ability to learn. A well-known Norwegian quote tells us "There is no bad weather, only bad clothing." With this in mind, please make sure your child has adequate clothing for outside, even in the rain. Please provide them with a change of socks and shoes, rainproof coat with hood or hat and possibly an umbrella. Mitchell has a lending library as well, for emergencies.

## ABSENCES

While it is always a good idea to inform your child's teacher of their planned absence, we are reminding families that your first call should be to the school office. To report any absence, early departure or late arrival, please call our Early Warning Line at:

**604-668-6229**



## CARNAVAL PARADE - FEB. 7

Join us for the Mitchell Carnival Parade on February 7, at 10:30, around the traffic circle! You'll have a chance to hear our band, see Bonhomme and Bûcheron and dance to some traditional French-Canadian music.

## SNACKS AND LUNCHES

We are reminding families to please send students to school with a nutritious snack and a lunch. If your child will require a spoon or fork to eat, please provide this as well. The school will only provide these items in case of emergency.



# FIREBIRD CORNER

## SCHOOL HOURS

**CLASSES START:** 8:45

**RECESS:** 10:10 - 10:25

**LUNCH RECESS:** 11:50 - 12:20

**LUNCH BREAK:** 12:20 - 12:42

**CLASSES END:** 2:45

## OFFICE HOURS

8:00 AM - 4:00 PM



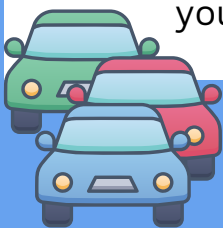
## VISITORS TO THE SCHOOL

The main doors to the school remain unlocked during office hours from 8:00 – 4:00. Visitors are **required to check into the office** when entering the building. This is for everyone's safety. Thanks for your cooperation!



## PARKING/TRAFFIC AT MITCHELL

Help keep our students safe by using the drop off zone for picking up and dropping off students only. Do not leave your car unattended in the drop-off zone or roundabout; if you need to come into the school, please park in a designated parking space at the west end of the school. Also, a reminder that there are no left turns permitted before and after school when leaving our parking lot. Thanks for your cooperation!



## IN CASE OF ABSENCE OR LATE ARRIVAL

Please inform the school by telephone when your child will be late or absent due to illness or an appointment, etc.

Our Early Warning line - **604-668-6229** - is available 24 hours a day for parents to leave a message. Please clearly state your child's first and last name, division and reason for absence. If no prior notice of absence is received, we will call home to determine the reason for the absence. Students arriving after 8:45 a.m. are required to enter through the main doors and check-in at the office before going to class.

