



MITCHELL ELEMENTARY SCHOOL

3800 #5 Rd, Richmond BC V6X 2T7

Phone 604-668-6225 | Early Warning 604-668-6229

Website: mitchell.sd38.bc.ca

Principal/Directrice: Mme V. Carrière - Vice Principal/Directeur Adjoint: Mr. K. Narbett



Newsletter 8 - November 15, 2024

We have had a super fun week at Mitchell! Thank you to the Grade 1 families who joined us on Wednesday to attend the Reading Workshop offered by the One-to-One Reading Society. We all learned a lot and came out of there with our brains buzzing with fun ideas to get involved in literacy with our children at home. Thank you to the PAC for joining us at our meeting this morning, too! Please note that there will NOT be a PAC meeting in December.

Upcoming Events/ Important Dates

Nov. 22 - Backwards Day

Nov. 25 - NO SCHOOL - Pro-D

Dec. 12 - Winter Concert (PM)

Dec. 17 - Gr. 6 Immunizations

Dec. 18 - Winter Concert (PM)

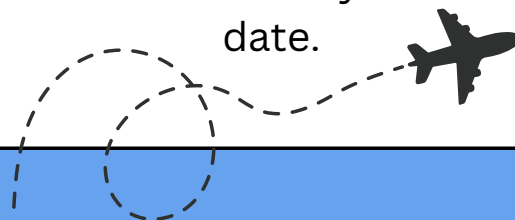
Dec. 19 - Learning Updates
published on MyEd

Dec. 20 - Last

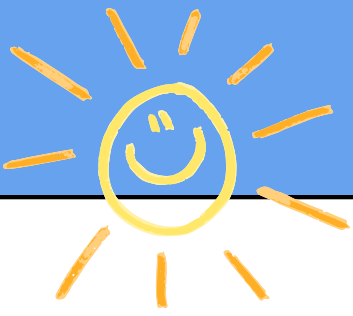
Dec. 23 - Jan. 3 - Winter Break

Winter Break - Early Departure, Late Arrival

If your child will be missing school before the winter break for vacation, please inform your classroom teacher, as well as the office. If you will be extending your winter break, please let the office and the classroom teacher know and confirm your return date.



Are you curious to know more about Mitchell? Please go to our school website, where you'll find updates on our school goal and more at: mitchell.sd38.bc.ca



K REGISTRATION OPENS NOVEMBER 1

Richmond School District 38 is excited to welcome Kindergarten registration applications for children born in 2020, turning 5 in 2025. These children will begin Kindergarten in September 2025. Online registration opens on November 1, 2024.

Please visit our website <https://sd38.bc.ca/student-registration/kindergarten-registration> for more information about our online registration process, required documents, important dates, and FAQs.

We encourage families to complete their registration within the Priority 1 registration window, which spans from November 1, 2024 to January 17, 2024, to maximize their chances of securing a spot at their catchment school. All registration applications received any time during the Priority 1 registration period will receive placement decisions by February 7, 2025.

Videos detailing Kindergarten registration have been made available on our District website, providing new parents with guidance on the registration process, English Language Learner (ELL) assessments, and District Program Options (Early French Immersion and Montessori). These videos are available in English and Mandarin. Please view the videos at <https://sd38.bc.ca/student-registration/kindergarten-registration>.

Finally, there will be a Kindergarten Information Evening for parents of students with disabilities and diverse abilities on Zoom held on November 6th from 6:30 – 7:30pm. A link to the Zoom is available on our District website <https://sd38.bc.ca/student-registration/kindergarten-registration>. There will also be an info session about district program options on November 26 (see flyer below).

Thank you and please share this information with your friends and family who have Kindergarten aged children!





Parent Education Session:

District Program Options for Kindergarten

The Richmond School District provides two district program options for students entering Kindergarten. We invite families with children registering for the 2025-2026 school year to join district staff to learn more about Early French Immersion and Montessori programs.

Join us for an informative session focused on District Program Options (Early French Immersion and Montessori) for Kindergarten learners.

Topics will include:

- Early French Immersion (EFI) Program
- Montessori Program
- Registration Information
- Important Dates to Note
- Frequently Asked Questions



Virtual on Microsoft Teams

(meeting link will be sent after registration is submitted)



Tuesday, November 26, 2024



6:00pm



**Hosts: Brooke Douglas, Gordon Fitt,
Linda Chau, Catherine Jule**

Register Here!



FIREBIRD CORNER

SCHOOL HOURS

CLASSES START: 8:45

RECESS: 10:10 - 10:25

LUNCH RECESS: 11:50 - 12:20

LUNCH BREAK: 12:20 - 12:42

CLASSES END: 2:45

OFFICE HOURS

8:00 AM - 4:00 PM



VISITORS TO THE SCHOOL

The main doors to the school remain unlocked during office hours from 8:00 – 4:00. Visitors are **required to check into the office** when entering the building. This is for everyone's safety. Thanks for your cooperation!



PARKING/TRAFFIC AT MITCHELL

Help keep our students safe by using the drop off zone for picking up and dropping off students only. Do not leave your car unattended in the drop-off zone or roundabout; if you need to come into the school, please park in a designated parking space at the west end of the school. Also, a reminder that there are no left turns permitted before and after school when leaving our parking lot. Thanks for your cooperation!



IN CASE OF ABSENCE OR LATE ARRIVAL

Please inform the school by telephone when your child will be late or absent due to illness or an appointment, etc.

Our Early Warning line - **604-668-6229** - is available 24 hours a day for parents to leave a message. Please clearly state your child's first and last name, division and reason for absence. If no prior notice of absence is received, we will call home to determine the reason for the absence. Students arriving after 8:45 a.m. are required to enter through the main doors and check-in at the office before going to class.





Supporting a Cause Never Tasted So Good!

Buy your favourite chocolates to support Mitchell Elementary PAC



Go to fundraising.purdys.com or Scan QR →



Enter customer # 77801 to shop & support.

Place your order by Cheque-Nov22nd | Online-Nov30th

Contact the Mitchell Elementary PAC Team at MitchellElementaryPAC@outlook.com
for more details.



CANADA'S CHOCOLATIER SINCE 1907