



MITCHELL ELEMENTARY SCHOOL

3800 #5 Rd, Richmond BC V6X 2T7

Phone 604-668-6225 | Early Warning 604-668-6229

Website: mitchell.sd38.bc.ca

Principal/Directrice: Mme V. Carrière - Vice Principal/Directeur Adjoint: Mr. K. Narbett



Newsletter 6 - October 24, 2024

Thank you for joining us during conferences on Tuesday and Wednesday of this week. It is always a pleasure to connect and reconnect with families. I hope that you found your conferences informational and helpful in knowing how to support your children at home. This week, students also took part in two important safety drills: fire and hold and secure. They did very well with both! Good job, Firebirds!

This is a reminder that tomorrow, October 25, is Pro-D and that there is no school for students.

Upcoming Events/ Important Dates

Oct. 25 - PRO-D (NO SCHOOL)

Oct. 29 - Photo Retakes

Oct. 31 - Happy Halloween and Diwali!

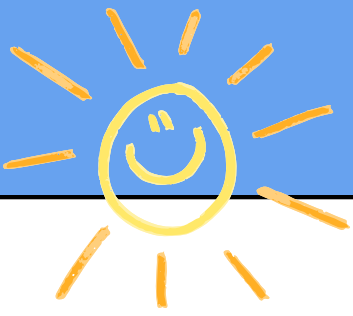
Nov. 1 - PAC Movie Night
(Despicable Me 4)

Nov. 7 - Camp Jubilee Info Session
(Gr. 6/7 families) at 6:30 PM

CULTURAL CELEBRATIONS AT MITCHELL

At Mitchell, we strive to create a welcoming atmosphere, where all students, staff and families feel that they belong. We encourage our students to learn about a variety of cultural celebrations. With Halloween and Diwali coming up, we want all our community members to be reminded of this. It is our hope that all students who can are present at school on October 31, as it is a learning day. There will not be a Halloween assembly, but different classes may do different learning activities around the themes of Halloween or Diwali, just as they would to teach about any other cultural celebrations.

Are you curious to know more about Mitchell? Please go to our school website, where you'll find updates on our school goal and more at:
mitchell.sd38.bc.ca



K REGISTRATION OPENS NOVEMBER 1

Richmond School District 38 is excited to welcome Kindergarten registration applications for children born in 2020, turning 5 in 2025. These children will begin Kindergarten in September 2025. Online registration opens on November 1, 2024.

Please visit our website <https://sd38.bc.ca/student-registration/kindergarten-registration> for more information about our online registration process, required documents, important dates, and FAQs.

We encourage families to complete their registration within the Priority 1 registration window, which spans from November 1, 2024 to January 17, 2024, to maximize their chances of securing a spot at their catchment school. All registration applications received any time during the Priority 1 registration period will receive placement decisions by February 7, 2025.

Videos detailing Kindergarten registration have been made available on our District website, providing new parents with guidance on the registration process, English Language Learner (ELL) assessments, and District Program Options (Early French Immersion and Montessori). These videos are available in English and Mandarin. Please view the videos at <https://sd38.bc.ca/student-registration/kindergarten-registration>.

Finally, there will be a Kindergarten Information Evening for parents of students with disabilities and diverse abilities on Zoom held on November 6th from 6:30 – 7:30pm.

A link to the Zoom is available on our District website <https://sd38.bc.ca/student-registration/kindergarten-registration>.

Thank you and please share this information with your friends and family who have Kindergarten aged children!





HALLOWEEN COSTUMES

Students who want to may wear a costume to school on October 31. We are asking that you follow certain guidelines when thinking about a costume for your child at school:

- 1) Culture (Indigenous regalia, dreadlocks, etc.), race (black face/brown face, etc.) and religion (nun, priest, hijab, etc.) are NOT a costume: It is important to keep in mind that we need to be sensitive to groups that have, in the past, been marginalized through mimicry and cultural appropriation during Halloween and other 'dress up' events.
- 2) Gender is not a costume: gender switching and stereotyping for humour or to mock could be hurtful.
- 3) Safety. Weapons, even plastic ones, will not be accepted as accessories for costumes at school. They pose a threat to safety for students when misused. Masks will not be accepted as we need to see students' faces..
- 4) Gory and violent costumes are too scary for most of our younger students and are not appropriate for school.
- 5) Let's think about our ecological footprint: is there a costume that could be re-used or borrowed from a friend? Could you perhaps consider making your costume yourself from recycled materials?

LEARNING STARTS AT 8:45

We are reminding families that learning/teaching starts at 8:45. This means that at 8:45, students should be in class with their teachers. We are asking families to make all efforts possible to arrive to school prior to this time. When students are late to school, not only do they lose out on instructional time, they also disrupt the learning of others upon their arrival.



CAMP JUBILEE INFO SESSION (GRADES 6 & 7 PARENTS)

We wish to remind all grade 6 and 7 families that we will be hosting an info session about our upcoming camp field trip at Camp Jubilee. A representative from Camp Jubilee will be with us to share information about the camp (activities, set-up, FAQ) and will be able to answer any question you may have about camp. We are asking that at least one adult per grade 6/7 family comes to this important session. Students do not have to be present at this session, but are welcome to join if they are interested in learning more about camp.

See you on November 7, at 6:30 PM



PARENT READING WORKSHOP (GRADE 1)

We are happy to invite our grade 1 parents/guardians to a special workshop on November 13, at 9:00 in our school library. This workshop will be hosted by the One-to-One Reading Society and will provide families with strategies to read at home with their children. We encourage any family who can to join us for this special opportunity. This is a free event, and families will be asked to bring their child to the workshop.



PARKING GUIDELINES

We have noticed an increase in usage of our two accessible parking stalls located by the main entrance. We are reminding families that these stalls should only be used with permit. Furthermore, even with a permit, misuse of these stalls can create complex situations for our students with accessibility needs. We are reminded families to use these stalls only if the person assigned to the permit is in the vehicle **and** expected to walk to or from the school. We thank you for cooperation in making Mitchell an accessible space for all learners and community members.



WEST COAST RECESS

Just a reminder that children at Mitchell will be going outside rain or shine during recess and lunch breaks. We believe that being able to go outside, breathe lots of fresh oxygen and move around is very good for children's well-being and ability to learn. A well-known Norwegian quote tells us "There is no bad weather, only bad clothing." With this in mind, please make sure your child has adequate clothing for outside, even in the rain. Please provide them with a change of socks and shoes, rainproof coat with hood or hat and possibly an umbrella. Mitchell has a lending library as well, for emergencies.



FIREBIRD CORNER

SCHOOL HOURS

CLASSES START: 8:45

RECESS: 10:10 - 10:25

LUNCH RECESS: 11:50 - 12:20

LUNCH BREAK: 12:20 - 12:42

CLASSES END: 2:45

OFFICE HOURS

8:00 AM - 4:00 PM



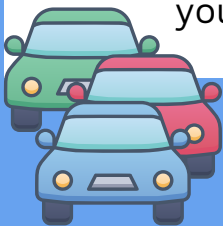
VISITORS TO THE SCHOOL

The main doors to the school remain unlocked during office hours from 8:00 – 4:00. Visitors are **required to check into the office** when entering the building. This is for everyone's safety. Thanks for your cooperation!



PARKING/TRAFFIC AT MITCHELL

Help keep our students safe by using the drop off zone for picking up and dropping off students only. Do not leave your car unattended in the drop-off zone or roundabout; if you need to come into the school, please park in a designated parking space at the west end of the school. Also, a reminder that there are no left turns permitted before and after school when leaving our parking lot. Thanks for your cooperation!



IN CASE OF ABSENCE OR LATE ARRIVAL

Please inform the school by telephone when your child will be late or absent due to illness or an appointment, etc. Our Early Warning line - **604-668-6229** - is available 24 hours a day for parents to leave a message. Please clearly state your child's first and last name, division and reason for absence. If no prior notice of absence is received, we will call home to determine the reason for the absence. Students arriving after 8:45 a.m. are required to enter through the main doors and check-in at the office before going to class.

