



MITCHELL ELEMENTARY SCHOOL

3800 #5 Rd, Richmond BC V6X 2T7

Phone 604-668-6225 | Early Warning 604-668-6229

Website: mitchell.sd38.bc.ca

Principal/Directrice: Mme V. Carrière - Vice Principal/Directeur Adjoint: Mr. K. Narbett

Newsletter 5 - October 18, 2024

We had another great week of learning at Mitchell. On Thursday, we practice our Earthquake Evacuation Protocol during the BC Shakeout drill. Students did well and it is always reassuring to see that our students would know how to stay safe in such an event. I would like to encourage everyone who can to go vote tomorrow if you have not already done so. Happy Election Day!

Be reminded that we have early dismissal at 1:45 on Tuesday and Wednesday next week.

Upcoming Events/ Important Dates

Oct. 19 - Election Day

Oct. 22/23 Early Dismissal -
Conferences

Oct. 25 - PRO-D (NO SCHOOL)

Oct. 29 - Photo Retakes

Oct. 31 - Happy Halloween and
Diwali!

Nov. 1 - PAC Movie Night

PARENT-TEACHER CONFERENCES

October 22 and 23 are designated dates in our calendar for conferences. Some teachers might also offer conference times on other dates. You should have already received communication from your child's teacher regarding booking an appointment.

LOST AND FOUND

Mitchell's lost and found is packed with stuff! While you are at school for conferences next week, please make sure to stop by; you might find some of your family's items.

Are you curious to know who the Mitchell staff are? Please go to our school website, where you'll find a complete and detailed staff list:

mitchell.sd38.bc.ca

K REGISTRATION OPENS NOVEMBER 1

Richmond School District 38 is excited to welcome Kindergarten registration applications for children born in 2020, turning 5 in 2025. These children will begin Kindergarten in September 2025. Online registration opens on November 1, 2024.

Please visit our website <https://sd38.bc.ca/student-registration/kindergarten-registration> for more information about our online registration process, required documents, important dates, and FAQs.

We encourage families to complete their registration within the Priority 1 registration window, which spans from November 1, 2024 to January 17, 2024, to maximize their chances of securing a spot at their catchment school. All registration applications received any time during the Priority 1 registration period will receive placement decisions by February 7, 2025.

Videos detailing Kindergarten registration have been made available on our District website, providing new parents with guidance on the registration process, English Language Learner (ELL) assessments, and District Program Options (Early French Immersion and Montessori). These videos are available in English and Mandarin. Please view the videos at <https://sd38.bc.ca/student-registration/kindergarten-registration>.

Finally, there will be a Kindergarten Information Evening for parents of students with disabilities and diverse abilities on Zoom held on November 6th from 6:30 – 7:30pm. A link to the Zoom is available on our District website <https://sd38.bc.ca/student-registration/kindergarten-registration>.

Thank you and please share this information with your friends and family who have Kindergarten aged children!

CULTURAL CELEBRATIONS AT MITCHELL

At Mitchell, we strive to create a welcoming atmosphere, where all students, staff and families feel that they belong. We encourage our students to learn about a variety of cultural celebrations. With Halloween and Diwali coming up, we want all our community members to be reminded of this. It is our hope that all students who can are present at school on October 31, as it is a learning day. There will not be a Halloween assembly, but different classes may do different learning activities around the themes of Halloween or Diwali, just as they would to teach about any other cultural celebrations.

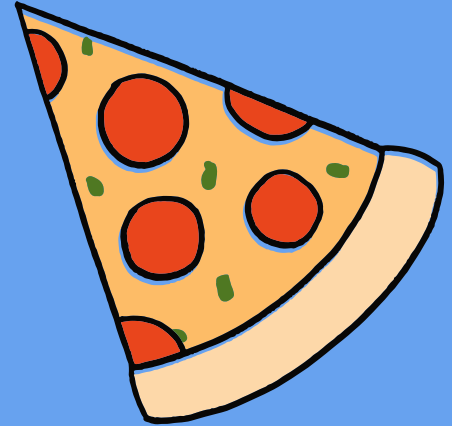


TERRY FOX RUN - CAMPAIGN UPDATE

Thank you to all of you who have so generously donated to the Terry Fox Foundation! I am pleased to inform our families that after recount, we have surpassed our goal and raised \$965! Excellent work, Firebirds!

HOT LUNCH SUPPORT

As part of Mitchell's Feeding Futures initiative, we would like to offer assistance to families who cannot afford the cost of PAC hot lunches on Fridays, but would like their children to participate to it. To do this, Mme Val will process orders herself once per month. Please note that this year, we will not be able to help with treat days. Please reach out to Mme Val at vcarriere@sd38.bc.ca if you would like to sign up your child or for more information. All requests will remain confidential.



HALLOWEEN COSTUMES

Students who want to may wear a costume to school on October 31. We are asking that you follow certain guidelines when thinking about a costume for your child at school:

- 1) Culture (Indigenous regalia, dreadlocks, etc.), race (black face/brown face, etc.) and religion (nun, priest, hijab, etc.) are NOT a costume: It is important to keep in mind that we need to be sensitive to groups that have, in the past, been marginalized through mimicry and cultural appropriation during Halloween and other 'dress up' events.
- 2) Gender is not a costume: gender switching and stereotyping for humour or to mock could be hurtful.
- 3) Safety. Weapons, even plastic ones, will not be accepted as accessories for costumes at school. They pose a threat to safety for students when misused. Masks will not be accepted as we need to see student's face.
- 4) Gory and violent costumes are too scary for most of our younger students and are not appropriate for school.
- 5) Let's think about our ecological footprint: is there a costume that could be re-used or borrowed from a friend? Could you perhaps consider making your costume yourself from recycled materials?

LEARNING STARTS AT 8:45

We are reminding families that learning/teaching starts at 8:45. This means that at 8:45, students should be in class with their teachers. We are asking families to make all efforts possible to arrive to school prior to this time. When students are late to school, not only do they lose out on instructional time, they also disrupt the learning of others upon their arrival.

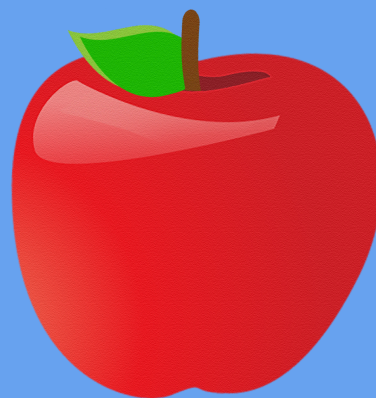


PARKING GUIDELINES

We have noticed an increase in usage of our two accessible parking stalls located by the main entrance. We are reminding families that these stalls should only be used with permit. Furthermore, even with a permit, misuse of these stalls can create complex situations for our students with accessibility needs. We are reminded families to use these stalls only if the person assigned to the permit is in the vehicle **and** expected to walk to or from the school. We thank you for cooperation in making Mitchell an accessible space for all learners and community members.

COMMUNITY FRIDGE

We are pleased to inform our families that we have a community fridge. With their teacher's permission, students can grab a snack from this fridge. These healthy snacks are provided by the district. We ask families to continue sending snacks and lunch with their children, as this food acts as a supplement to what your child already has.



WEST COAST RECESS

Just a reminder that children at Mitchell will be going outside rain or shine during recess and lunch breaks. We believe that being able to go outside, breathe lots of fresh oxygen and move around is very good for children's well-being and ability to learn. A well-known Norwegian quote tells us "There is no bad weather, only bad clothing." With this in mind, please make sure your child has adequate clothing for outside, even in the rain. Please provide them with a change of socks and shoes, rainproof coat with hood or hat and possibly an umbrella. Mitchell has a lending library as well, for emergencies.

FIREBIRD CORNER

SCHOOL HOURS

CLASSES START: 8:45

RECESS: 10:10 - 10:25

LUNCH RECESS: 11:50 - 12:20

LUNCH BREAK: 12:20 - 12:42

CLASSES END: 2:45

OFFICE HOURS

8:00 AM - 4:00 PM



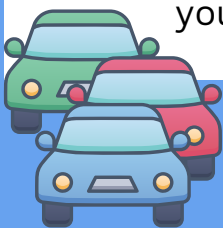
VISITORS TO THE SCHOOL

The main doors to the school remain unlocked during office hours from 8:00 – 4:00. Visitors are **required to check into the office** when entering the building. This is for everyone's safety. Thanks for your cooperation!



PARKING/TRAFFIC AT MITCHELL

Help keep our students safe by using the drop off zone for picking up and dropping off students only. Do not leave your car unattended in the drop-off zone or roundabout; if you need to come into the school, please park in a designated parking space at the west end of the school. Also, a reminder that there are no left turns permitted before and after school when leaving our parking lot. Thanks for your cooperation!



IN CASE OF ABSENCE OR LATE ARRIVAL

Please inform the school by telephone when your child will be late or absent due to illness or an appointment, etc. Our Early Warning line - **604-668-6229** - is available 24 hours a day for parents to leave a message. Please clearly state your child's first and last name, division and reason for absence. If no prior notice of absence is received, we will call home to determine the reason for the absence. Students arriving after 8:45 a.m. are required to enter through the main doors and check-in at the office before going to class.

