



MITCHELL ELEMENTARY SCHOOL

3800 #5 Rd, Richmond BC V6X 2T7

Phone 604-668-6225 | Early Warning 604-668-6229

Website: [mitchell.sd38.bc.ca](http://mitchell.sd38.bc.ca)

Principal/Directrice: Mme V. Carrière - Vice Principal/Directeur Adjoint: Mr. K. Narbett



## Newsletter 4 - October 11, 2024

We had another great week of learning at Mitchell. Thank you to those of you who came to the PAC meeting on Wednesday evening! We enjoy hearing families' voices and hope to see more of you at upcoming PAC meetings and events.

Please be reminded that there is no school on Monday next week.

### Upcoming Events/ Important Dates

Oct. 14 - Thanksgiving (NO SCHOOL)

Oct. 19 - Election Day

Oct. 22/23 Early Dismissal -  
Conferences

Oct. 25 - PRO-D (NO SCHOOL)

Oct. 29 - Photo Retakes

Oct. 31 - Happy Halloween and  
Diwali!

### CULTURAL CELEBRATIONS AT MITCHELL

At Mitchell, we strive to create a welcoming atmosphere, where all students, staff and families feel that they belong. We encourage our students to learn about a variety of cultural celebrations. With Halloween and Diwali coming up, we want all our community members to be reminded of this. It is our hope that all students who can are present at school on October 31, as it is a learning day. There will not be a Halloween assembly, but different classes may do different learning activities around the themes of Halloween or Diwali, just as they would to teach about any other cultural celebrations.

Are you curious to know who the Mitchell staff are? Please go to our school website, where you'll find a complete and detailed staff list:

[mitchell.sd38.bc.ca](http://mitchell.sd38.bc.ca)

## LEARNING STARTS AT 8:45

We are reminding families that learning/teaching starts at 8:45. This means that at 8:45, students should be in class with their teachers. We are asking families to make all efforts possible to arrive to school prior to this time. When students are late to school, not only do they lose out on instructional time, they also disrupt the learning of others upon their arrival.



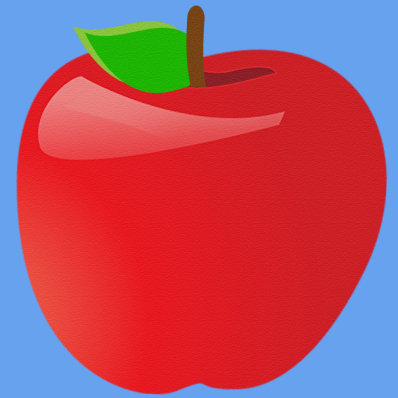
## VISION CHECKS FOR CHILDREN

Did you know that all children should get a check-up by an optometrist before starting kindergarten to enter school ready to learn? Teachers or other professionals may recommend vision check-ups for children at other ages when concerns arise. Vision checks are no longer provided at the school level. In BC, MSP covers yearly vision check-ups for children under age 19. For more information, on how to access this service, please go to: <https://www.vch.ca/en/vision-services-children>



## COMMUNITY FRIDGE

We are pleased to inform our families that we have a community fridge. With their teacher's permission, students can grab a snack from this fridge. These healthy snacks are provided by the district. We ask families to continue sending snacks and lunch with their children, as this food acts as a supplement to what your child already has.



## WEST COAST RECESS

Just a reminder that children at Mitchell will be going outside rain or shine during recess and lunch breaks. We believe that being able to go outside, breathe lots of fresh oxygen and move around is very good for children's well-being and ability to learn. A well-known Norwegian quote tells us "There is no bad weather, only bad clothing." With this in mind, please make sure your child has adequate clothing for outside, even in the rain. Please provide them with a change of socks and shoes, rainproof coat with hood or hat and possibly an umbrella. Mitchell has a lending library as well, for emergencies.

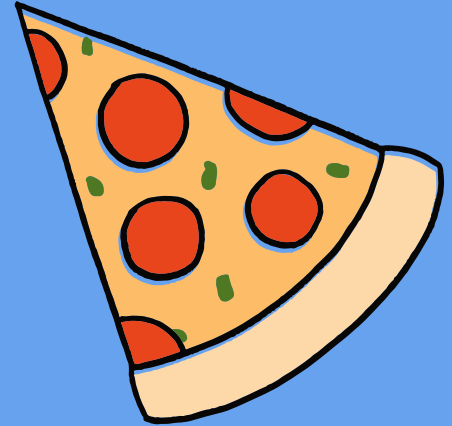


### **TERRY FOX RUN - CAMPAIGN UPDATE**

Thank you to all of you who have so generously donated to the Terry Fox Foundation! I am pleased to inform our families that today, we made our official donation of the amount of \$850.30. Excellent work, Firebirds!

### **HOT LUNCH SUPPORT**

As part of Mitchell's Feeding Futures initiative, we would like to offer assistance to families who cannot afford the cost of PAC hot lunches on Fridays, but would like their children to participate to it. To do this, Mme Val will process orders herself once per month. Please note that this year, we will not be able to help with treat days. Please reach out to Mme Val at [vcarriere@sd38.bc.ca](mailto:vcarriere@sd38.bc.ca) if you would like to sign up your child or for more information. All requests will remain confidential.



### **HALLOWEEN COSTUMES**

Students who want to may wear a costume to school on October 31. We are asking that you follow certain guidelines when thinking about a costume for your child at school:

- 1) Culture (Indigenous regalia, dreadlocks, etc.), race (black face/brown face, etc.) and religion (nun, priest, hijab, etc.) are NOT a costume: It is important to keep in mind that we need to be sensitive to groups that have, in the past, been marginalized through mimicry and cultural appropriation during Halloween and other 'dress up' events.
- 2) Gender is not a costume: gender switching and stereotyping for humour or to mock could be hurtful.
- 3) Safety. Weapons, even plastic ones, will not be accepted as accessories for costumes at school. They pose a threat to safety for students when misused. Masks will not be accepted as we need to see student's face.
- 4) Gory and violent costumes are too scary for most of our younger students and are not appropriate for school.
- 5) Let's think about our ecological footprint: is there a costume that could be re-used or borrowed from a friend? Could you perhaps consider making your costume yourself from recycled materials?

# FIREBIRD CORNER

## SCHOOL HOURS

**CLASSES START:** 8:45

**RECESS:** 10:10 - 10:25

**LUNCH RECESS:** 11:50 - 12:20

**LUNCH BREAK:** 12:20 - 12:42

**CLASSES END:** 2:45

## OFFICE HOURS

8:00 AM - 4:00 PM



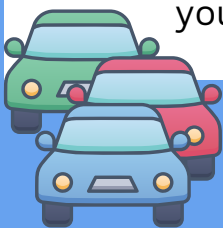
## VISITORS TO THE SCHOOL

The main doors to the school remain unlocked during office hours from 8:00 – 4:00. Visitors are **required to check into the office** when entering the building. This is for everyone's safety. Thanks for your cooperation!



## PARKING/TRAFFIC AT MITCHELL

Help keep our students safe by using the drop off zone for picking up and dropping off students only. Do not leave your car unattended in the drop-off zone or roundabout; if you need to come into the school, please park in a designated parking space at the west end of the school. Also, a reminder that there are no left turns permitted before and after school when leaving our parking lot. Thanks for your cooperation!



## IN CASE OF ABSENCE OR LATE ARRIVAL

Please inform the school by telephone when your child will be late or absent due to illness or an appointment, etc. Our Early Warning line - **604-668-6229** - is available 24 hours a day for parents to leave a message. Please clearly state your child's first and last name, division and reason for absence. If no prior notice of absence is received, we will call home to determine the reason for the absence. Students arriving after 8:45 a.m. are required to enter through the main doors and check-in at the office before going to class.

