

MITCHELL ELEMENTARY SCHOOL  
3800 #5 Rd, Richmond BC V6X 2T7  
Phone 604-668-6225 | Early Warning 604-668-6229  
Website: [mitchell.sd38.bc.ca](http://mitchell.sd38.bc.ca)

Principal/Directrice: Mme V. Carrière - Vice Principal/Directeur Adjoint: Mr. K. Narbett

## Newsletter 1 - September 6, 2024

Another school year has begun and the staff at Mitchell Elementary is thrilled to welcome your children to their next learning adventure! Whether you are a returning family or a new family, we know these are exciting times that often come with mixed emotions. We invite you to talk about this with your children and to remind them that all feelings are ok! This month will be busy, so please make sure to look at the dates below so that you don't miss a beat.



### Upcoming Events/ Important Dates

Sept. 12 - First full day for K students

Sept. 13 - Terry Fox Run (PM)

Sept. 16-26 - Ultimate Firsbee Workshops (all classes)

Sept. 19 - Meet the Staff Night (5PM - 6PM)

Sept. 20 - PRO-D/NO SCHOOL

Sept. 27 - Orange Shirt Day

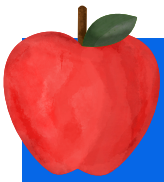


### Meet the Staff Night

Sept. 19, 5PM-6PM

Classrooms will be open for families to meet their child's teacher and other staff members from our school. At 5:40, we will gather in the gym for presentations. We hope to see you there!

Are your curious to know who the Mitchell staff are? Please go to our school website, where you'll find a complete and detailed staff list:  
[mitchell.sd38.bc.ca](http://mitchell.sd38.bc.ca)



## COMMUNITY FRIDGE

We are pleased to inform our families that we have a community fridge. With their teacher's permission, students can grab a snack from this fridge. These healthy snacks are provided by the district. We ask families to continue sending snacks and lunch with their children, as this food acts as a supplement to what your child already has.



## MEDICATIONS AT SCHOOL

If your child has any allergies or medical conditions that require him/her to be given prescribed medication at school, please ensure you complete a Request for Administration of Medication form and return it, along with the medication, to the school office. Thank you for working with us to ensure the health and safety of our students.



## STUDENT PACKAGE OF FORMS

Today or early next week, your child will bring home a package from the office with important forms for you to fill. Please return these forms to your classroom teacher as soon as possible. This will include information about Cash Online. Please reach out to the office if you need help with Cash Online. Please note that some forms are double-sided, so be sure to check both sides! The forms will also come with some documents that are yours to keep, such as our yearly calendar and a magnet with our contact information.

## ALLERGY ALERT!

Please be aware that Mitchell School has many students with severe, life-threatening food allergies. Some classrooms may be designated nut free in order to protect the health of these students. Please help us limit the nut products entering our school overall, as the impact on a student can happen anywhere in the school. If at all possible, please do not send food to school containing nuts.



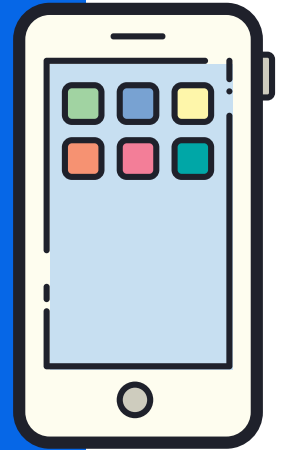
## WEST COAST RECESS

Just a reminder that children at Mitchell will be going outside rain or shine during recess and lunch breaks. We believe that being able to go outside, breathe lots of fresh oxygen and move around is very good for children's well-being and ability to learn. A well-known Norwegian quote tells us "There is no bad weather, only bad clothing." With this in mind, please make sure your child has adequate clothing for outside, even in the rain. Please provide them with a change of socks and shoes, rainproof coat with hood or hat and possibly an umbrella. Mitchell has a lending library as well, for emergencies.

## PERSONAL DEVICE USAGE POLICY

You may have heard that new policies regarding the use of personal devices by students will be reinforced, starting this school year. The use of student personal digital devices should be appropriate to a student's age and stage of development. As such, the district's policy was developed to support the work of educators in our school, and to avoid distractions to students during school hours. In short, this policy was developed to support student learning. It is important to mention that this new policy very much reflects past practice at our school.

Therefore, students will not notice much difference from previous years, as they should be used to keeping their devices turned off, in their backpacks, from 8:45 to 2:45.



## BACKPACK BUDDIES PROGRAM

As a part of our Feeding Futures initiatives, we are partnering with Backpack Buddies again this year (<https://www.backpackbuddies.ca/>) to support some families with food security for the weekends.

If your family would benefit from receiving food packages for your children every week before the weekend, please email Mme Val with the following information:

- Name of students
- Name of children or parents/guardians who would be responsible for picking up the food every week.

Please note that students or their parents/guardians would be responsible for carrying the food packages home. The school cannot deliver food packages to students' homes. Food packages are for Mitchell students only. We will confirm with families when/if we are approved to receive the support of Backpack Buddies.



# FIREBIRD CORNER

## SCHOOL HOURS

**CLASSES START: 8:45**

**RECESS: 10:10 - 10:25**

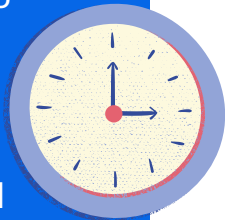
**LUNCH RECESS: 11:50 - 12:20**

**LUNCH BREAK: 12:20 - 12:42**

**CLASSES END: 2:45**

## OFFICE HOURS

8:00 AM - 4:00 PM



## VISITORS TO THE SCHOOL

The main doors to the school remain unlocked during office hours from 8:00 – 4:00. Visitors are **required to check into the office** when entering the building. This is for everyone's safety. Thanks for your cooperation!



## PARKING/TRAFFIC AT MITCHELL

Help keep our students safe by using the drop off zone for picking up and dropping off students only. Do not leave your car unattended in the drop-off zone or roundabout; if you need to come into the school, please park in a designated parking space at the west end of the school. Also, a reminder that there are no left turns permitted before and after school when leaving our parking lot. Thanks for your cooperation!



## IN CASE OF ABSENCE OR LATE ARRIVAL

Please inform the school by telephone when your child will be late or absent due to illness or an appointment, etc. Our Early Warning line - **604-668-6229** - is available 24 hours a day for parents to leave a message. Please clearly state your child's first and last name, division and reason for absence. If no prior notice of absence is received, we will call home to determine the reason for the absence. Students arriving after 8:45 a.m. are required to enter through the main doors and check-in at the office before going to class.

